



Z 50 II

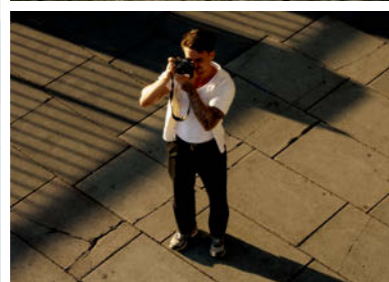
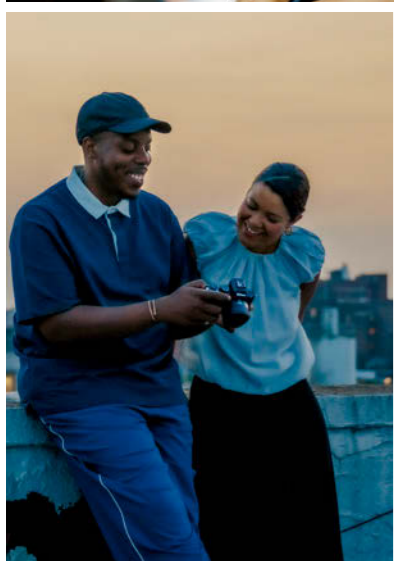
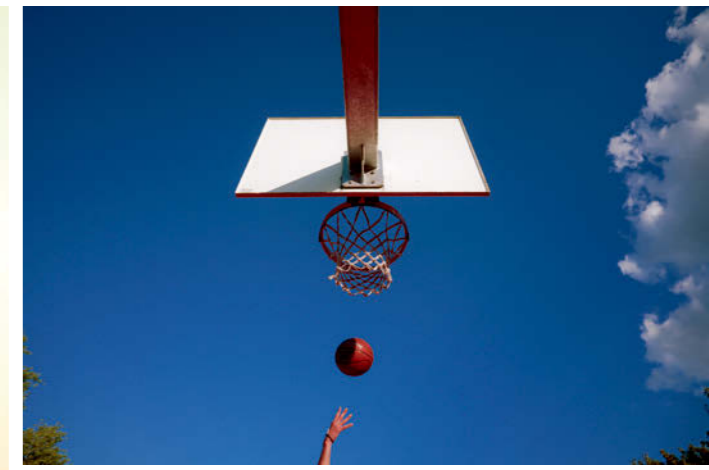
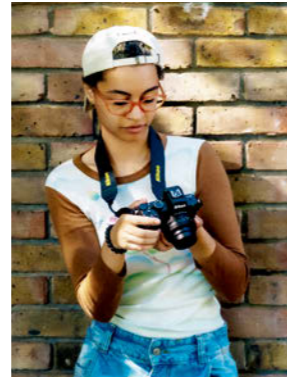


DISCOVER. PLAY.



DISCOVER. PLAY.

Discover a new way to see the world with the Z50II. Its intuitive design and user-friendly features invite you to dive in and start capturing vibrant, personal moments from the very first click. Play with colour and let your creativity flow as you explore fresh perspectives, all while staying effortlessly true to yourself.



The Z50II packs powerful features into a compact design. With one-touch access to Imaging Recipes and Picture Controls, customising the look of your photos and videos is effortless. Its video capabilities make creating cinematic shorts and vlogs a simple process, while the advanced autofocus and subject tracking—inherited from Nikon's high-end models—ensure your shots remain sharp, even during fast action. The camera is also designed to capture high-resolution images in low-light conditions, such as indoors or at night, with minimal noise. For those looking to elevate their videography, the Z50II offers dramatic slow-motion, N-Log, and helpful video assist tools. Additionally, the high-luminance EVF delivers an immersive, distraction-free shooting experience. All this is available in a lightweight body, designed to inspire your creativity from the moment you pick it up.

Sunkissed Warmth



Summertime Shine



Nights Like This

Picture Control button – Get the colours you want instantly

The Z50II's new Picture Control button gives you quick access to a variety of colour presets with just a single press, letting you choose and see your desired Imaging Recipe or Picture Controls in real time on the monitor.



Dawn Hues



Sunset Reset



Updated Picture Control UI – Preview presets with ease

The Z50II's updated UI lets you see how your chosen Picture Control or Imaging Recipe affects your image in real time across a larger preview area. You can also filter the menu to show just your favourite options, making it quick and easy to achieve your desired look.

Elevate your style with limitless exploration of colours

Effortlessly experiment with different colours and styles using the bespoke Imaging Recipes available from Nikon Imaging Cloud, along with 31 pre-installed Picture Controls and Creative Picture Controls. The Z50II allows you to apply these Imaging Recipes and Picture Controls even in Auto shooting mode, ensuring a hassle-free creative experience.



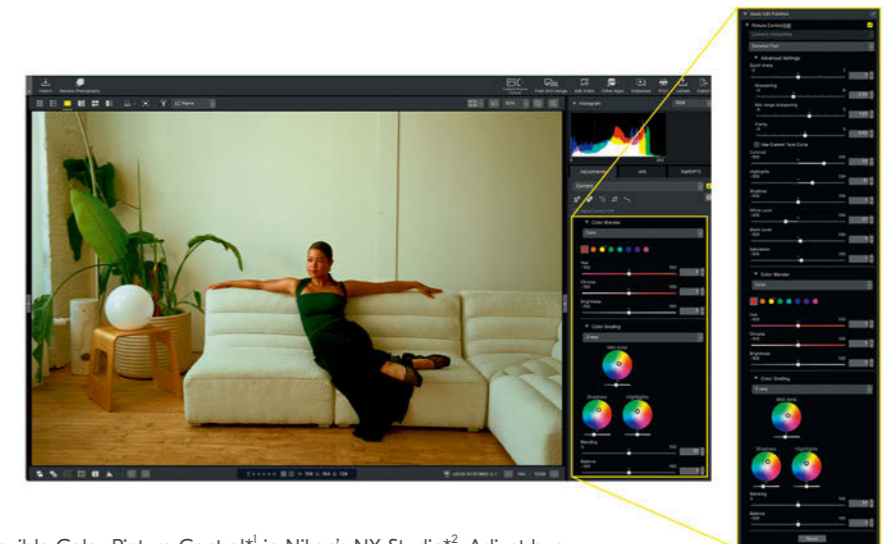
Flexible Color Picture Control – For an even more tailored look

Take your creativity further with Flexible Color Picture Control^{*1} in Nikon's NX Studio^{*2}. Adjust hue, saturation, and brightness using the Color Blender and Color Grading tools to craft your perfect preset. Save your custom settings and load them onto the Z50II via a memory card or from Nikon Imaging Cloud. You can then select your tailored look directly in the camera through the Custom Picture Controls^{*3}.

^{*1} Ver. 1.7.0 onwards

^{*2} Can only be created using RAW (NEF) files

^{*3} Custom picture controls created with Flexible Color can only be imported to cameras that support this function. Please check the supported models; as of November 2024, only supported models are Z50II and Z6III.





OFF

Product review mode — Focus effortlessly

The Z50II's product review mode makes it easy to manage focus during your videos. Simply activate the feature on the touch screen, and the camera will automatically switch focus between you and any objects you're showing. You can also customise the size of the focus area to fit your needs, giving you precise control over your shots.



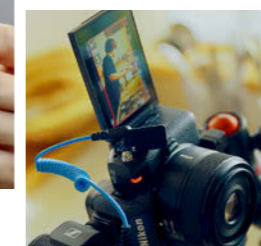
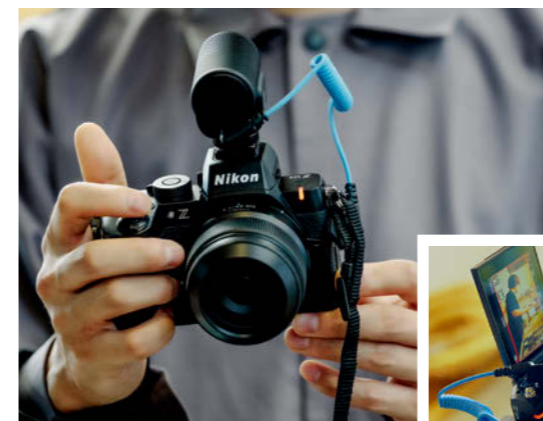
ON



Hi-Res Zoom — Stunning clarity up close

The Z50II lets you zoom up to 2x in Full HD recording without sacrificing image quality, even when using prime lenses*. Everything is handled in-camera, so you don't need extra gear. There are also 11 zoom speeds to choose from, so you can get just the look you want.

*You can also manually control zooming by using the control ring on NIKKOR Z lenses



REC lamp and red REC frame indicator — Record with confidence

With the Z50II, you'll always know when you're recording. The red REC lamp on the front of the camera clearly shows when you're filming, with three brightness levels as well as an option to turn it off. The red REC frame indicator on the LCD monitor also ensures you won't miss a moment, so you always know when you are—and, importantly, aren't—recording.



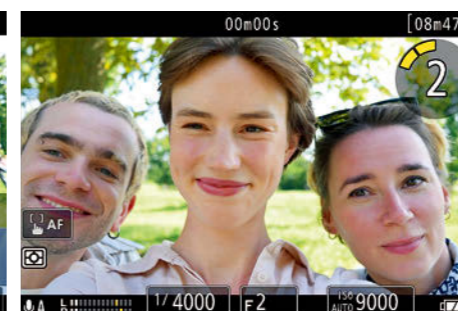
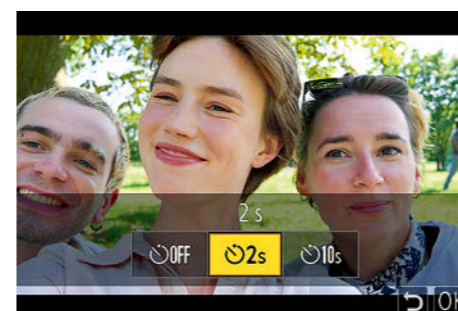
UVC/UAC support — Seamless webcam capabilities

Turn the Z50II into a high-quality webcam for live streaming or video calls. With UVC/UAC support, just connect the camera to your smartphone or computer via USB, and you're ready to go*.

*Additional software and drivers, such as applications for connecting with external cameras, may be required.

Video self-timer — Streamline Your Workflow

The Z50II's video self-timer gives you a moment to get into position before recording starts. Say goodbye to the awkward walk to the camera that you'd need to edit out later. Simply press the video-record button and choose a countdown of either 2 or 10 seconds to prepare for your perfect shot.





Autofocus with 9 types of subject detection — Pinpoint your perfect shot

With the power of EXPEED 7, the Z50II delivers autofocus performance on par with Nikon's top models. It automatically detects and tracks nine subject types: people, dogs, cats, birds, cars, motorcycles, bicycles, trains, and airplanes. If you know what you are shooting, you can choose a specific subject type, or alternatively, you can keep the setting in [Auto] and let the camera identify what subject is in the frame and lock the focus on it.



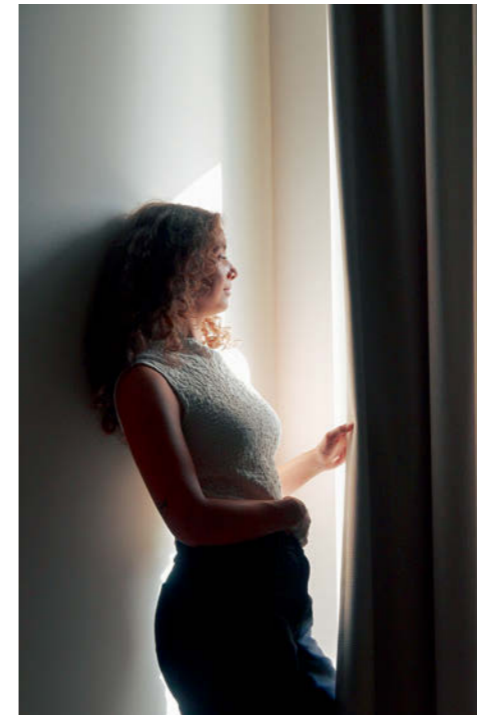
Auto shooting mode — Let the camera do the work

With the Z50II, you can rely on the camera to handle complex settings like aperture, shutter speed, and ISO, thanks to its advanced AI deep learning technology. The camera quickly recognises your subject and its surroundings and then optimises all the exposure settings for any given scene.



3D-tracking — Stay on target

The Z50II's 3D-tracking feature keeps your moving subjects in sharp focus by continuously adjusting the focus point. Perfect for fast-paced scenes, it allows you to concentrate on capturing the moment while the camera ensures crisp, clear shots every time.

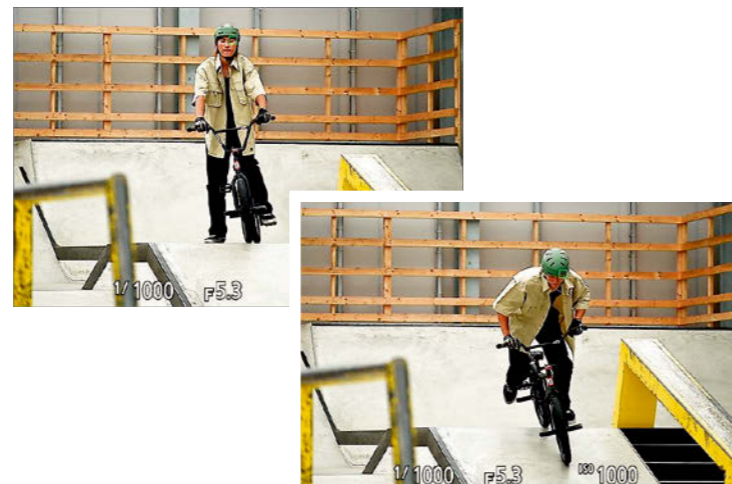


High ISO — Clear images in low light conditions

The Z50II excels in low-light scenarios, whether you're photographing a night out with friends or indoor moments. It supports ISO up to 51200, allowing you to capture clear, sharp details with minimal noise, maintaining high image quality even in challenging lighting conditions.

AF-A — Adaptive focus made easy

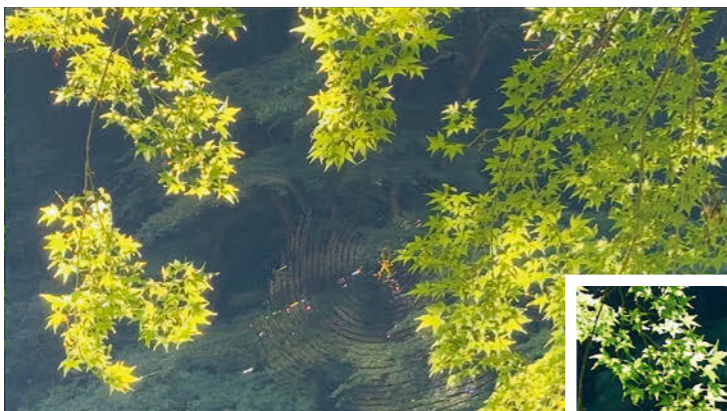
With the Z50II, the improved AF-A mode automatically switches the focus from AF-S for still subjects and AF-C for moving ones, so you don't have to. The camera can detect even the slightest of movement in your subject and then changes the mode to keep the focus on them. This is great for capturing subjects that move unpredictably — whether it's a pet, a child, or other moments of sudden action.



Built-in flash — Brighten it up

In scenes where your subject is dark or backlit, a touch of added light can transform your images. The Z50II features a convenient built-in pop-up flash that provides that extra bit of illumination when needed. This built-in flash not only enhances your shots in challenging lighting conditions but also expands your creative options, allowing you to experiment with your photography in exciting new ways.

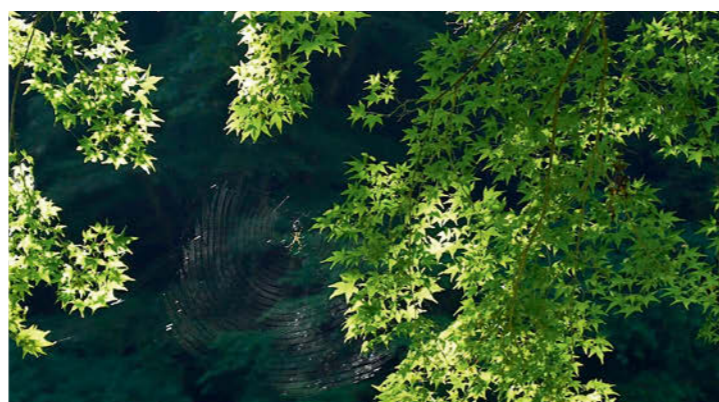




Smartphone

4K video — Achieve next-level detail

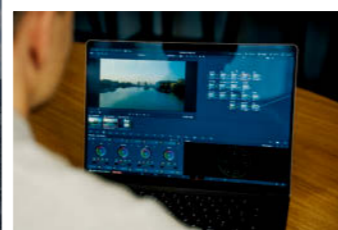
The Z50II takes your video content to the next level with features that go beyond what your phone can offer. When shooting in 4K resolution at 30p, you can capture footage with stunning detail, even in low-light situations, thanks to the camera's ability to automatically oversample the image from its 5.6K equivalent sensor.



Z50II



Graded



N-RAW (N-Log)

N-Log and more — Tailor your tone

Unlock the full potential of your videos with N-Log*, capturing greater colour information for more flexibility when colour grading, while also minimising underexposure and overexposure. You can also experiment in post-production with four RED-curated creative LUTs—Achromic, Film Bias, Film Bias Bleach Bypass, and Film Bias Offset. These LUTs bring RED cinema-camera colour science to Z50II footage, enabling you to give your videos an impressive look.

*When shooting in H.265 10-bit (MOV)



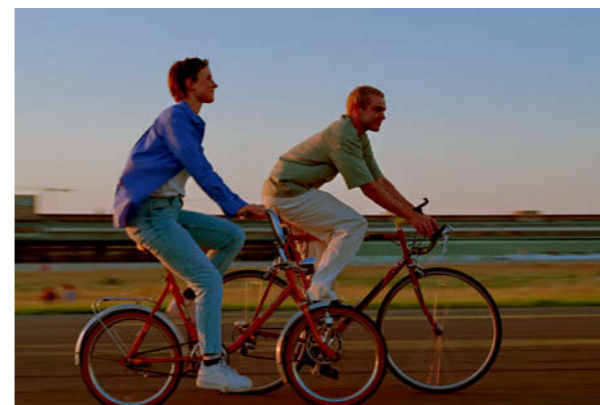
Example shots showcasing RED LUTs



NIKKOR Z DX 16-50mm f/3.5-6.3 VR — Nikon's tiny powerhouse

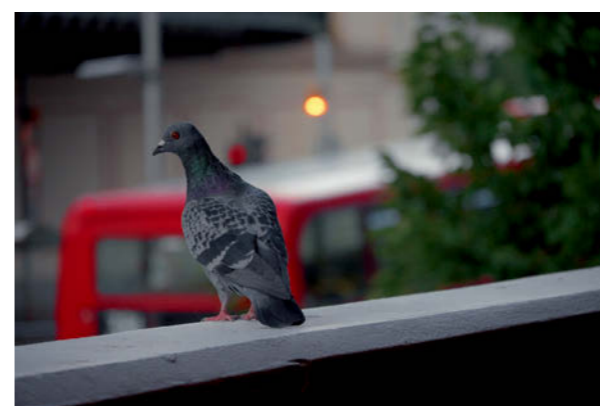
The NIKKOR Z DX 16-50mm f/3.5-6.3 VR, the smallest* NIKKOR Z zoom lens, offers a versatile zoom range ideal for everything from street scenes and landscapes to portraits and selfies. Its fast focusing ensures sharp photos and videos, making it a great all-rounder for various shooting needs.

*As of November 7, 2024. Based on Nikon research.



NIKKOR Z DX 50-250mm f/4.5-6.3 VR — Zoom in on the action

The NIKKOR Z DX 50-250mm f/4.5-6.3 VR's powerful 5× telephoto zoom lets you capture distant subjects with impressive detail. Whether you're photographing sports action or your dog playing in the park, this lens ensures clarity and sharpness even at a distance.

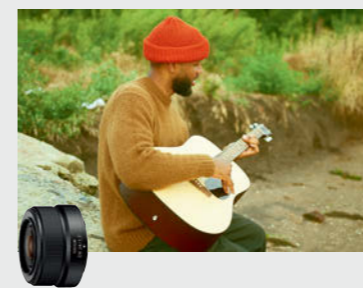


NIKKOR Z DX 18-140mm f/3.5-6.3 VR — Your ideal travel lens

The lightweight NIKKOR Z DX 18-140mm f/3.5-6.3 VR is your perfect travel companion with its versatile 7.8× zoom. Capture everything from sweeping landscapes to detailed close-ups with stunning clarity and beautifully blurred backgrounds. This compact lens offers high-resolution images and videos across its entire zoom range, making it ideal for on-the-go shooting.

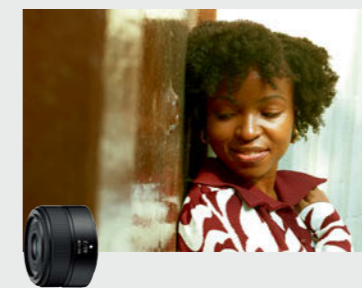
Prime lenses for stunning shots

NIKKOR Z prime lenses bring sharp focus to your subject with beautifully soft, blurred backgrounds. Ideal for low-light shooting, they create gorgeous bokeh that enhances your photos.



NIKKOR Z DX 24mm f/1.7 — Lightweight and versatile

The NIKKOR Z DX 24mm f/1.7 is your versatile companion for everyday moments. Its wide aperture delivers stunning bokeh, while the compact size makes it great for spontaneous shots — whether you're capturing city streets or close-up portraits.



NIKKOR Z 40mm f/2 — Compact size, big impact

Small but mighty, the NIKKOR Z 40mm f/2 is perfect for those who love lightweight gear with big results. Its 60mm equivalent on DX cameras is just right for portraits, street photography, and low-light indoor shots, all while providing rich, creamy bokeh.



NIKKOR Z DX 12-28mm f/3.5-5.6 PZ VR — Broaden your perspective

Craft immersive videos with this lightweight wide-angle zoom lens. You have effortless control to shoot from a distance using the ML-L7 Remote Control or SnapBridge*, and you choose from 11 smooth power-assisted zoom speeds. Enjoy sharp, stabilised video from an arm's length for selfies or vlogs.

*Version 2.10.0 onwards



High-luminance EVF — See clearly, up close

The Z50II's high-luminance EVF offers a distraction-free view by blocking out things in your peripheral vision, allowing you to fully connect with your subject. It's twice as bright as the Z50's EVF, ensuring clear, detailed visibility even in bright sunlight. With the EVF mirroring the settings on the LCD monitor, you can swiftly adjust functions without ever taking your eye away from the viewfinder, enhancing your shooting experience in various lighting conditions.



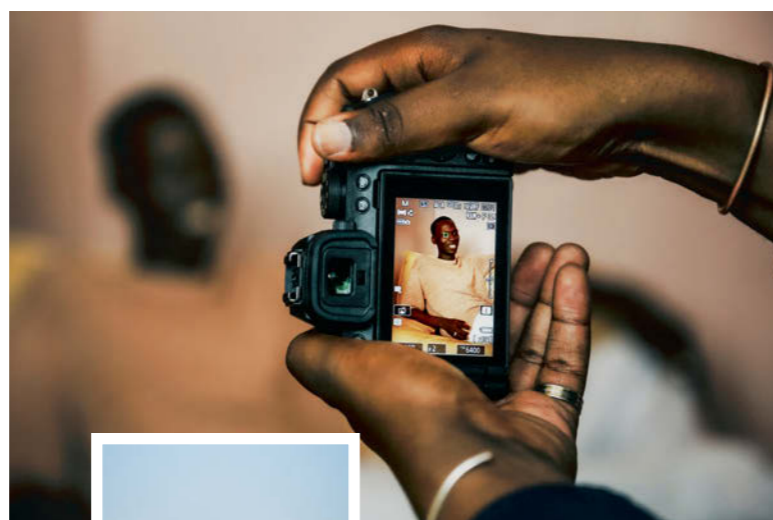
Vari-angle monitor — Flexibility across shooting scenarios

The Z50II's large vari-angle monitor gives you the freedom to shoot from any angle while keeping a clear view of your subject. Whether you're holding the camera high above your head, low to the ground, or taking selfies, you'll see everything from focus to your subject's expression, making it easy to capture every detail you need.



Adaptive vertical display — Free to shoot your way

When you switch the camera between horizontal and vertical, the Z50II automatically adjusts the LCD monitor, EVF, and i menu screen to match your orientation. This smooth transition makes changing between landscape and portrait modes effortless.



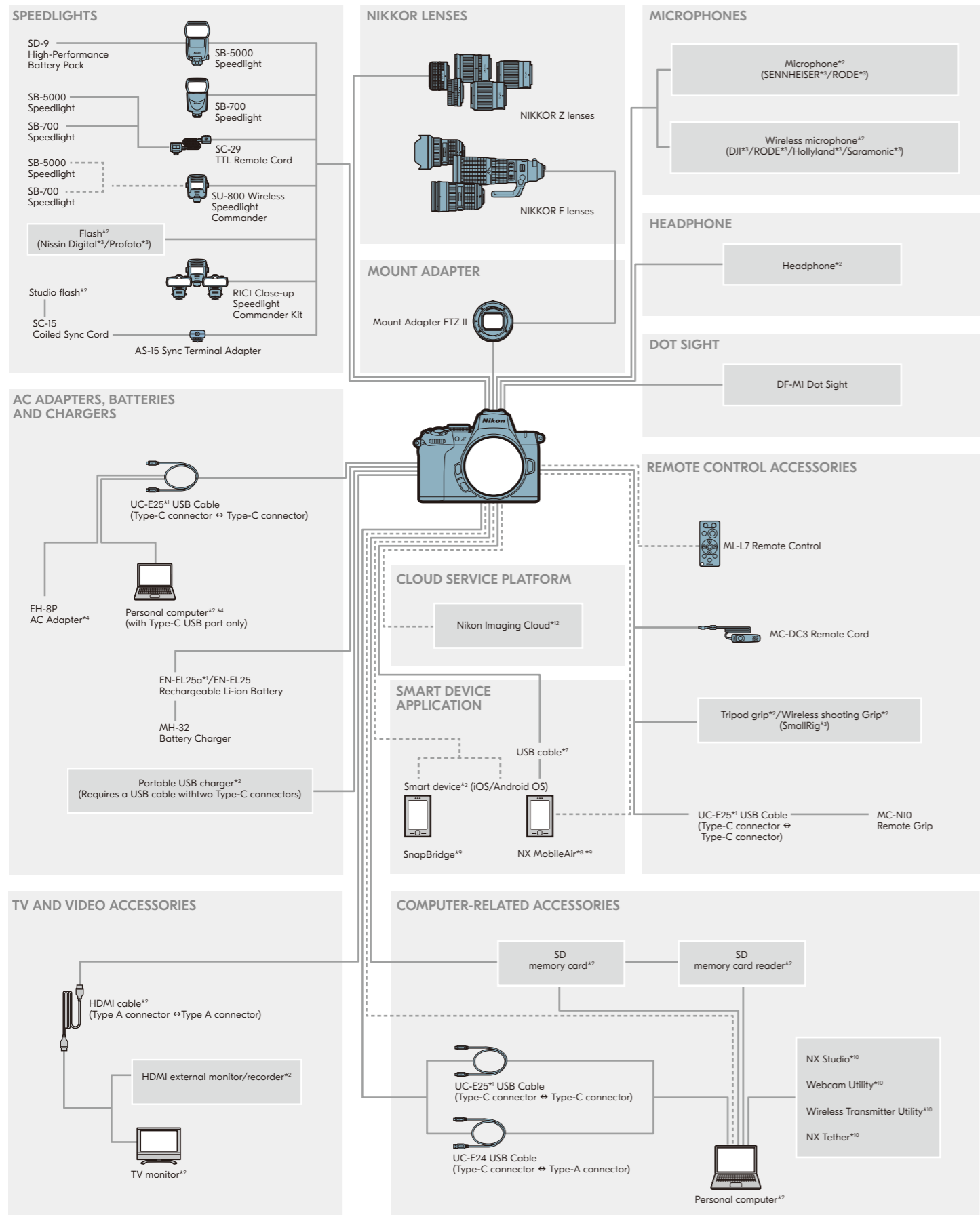
Lightweight and intuitive — Shoot with comfort and confidence

The Z50II's deep grip ensures a secure and comfortable hold, even during extended shoots. Additionally, special sealing applied to certain parts of the camera body means it's designed with dust- and drip-resistant performance* in mind, so you can shoot confidently whether you're caught in sudden rain or spending all day outdoors.

*Thorough dust- and drip-resistance is not guaranteed in all situations or under all conditions.



System Chart



Specifications

Type of camera	Digital camera with support for interchangeable lenses
Lens mount	Nikon Z mount
Compatible lenses	<ul style="list-style-type: none"> Z mount NIKKOR lenses F mount NIKKOR lenses (mount adapter required; restrictions may apply)
Effective pixels	20.9 million
Image sensor	23.5 × 15.7 mm CMOS sensor (Nikon DX format)
Total pixels	21.51 million
File format (image quality)	<ul style="list-style-type: none"> NEF (RAW): 14 bit; choose from lossless compression, high efficiency*, and high efficiency options JPEG: JPEG-Baseline compliant with fine (approx. 1:4), normal (approx. 1:8), or basic (approx. 1:16) compression; size-priority and optimal-quality compression available HEIF: Supports fine (approx. 1:4), normal (approx. 1:8), or basic (approx. 1:16) compression NEF (RAW)+JPEG: Single photograph recorded in both NEF (RAW) and JPEG formats NEF (RAW)+HEIF: Single photograph recorded in both NEF (RAW) and HEIF formats
Picture Control System	Auto, Standard, Neutral, Vivid, Monochrome, Flat Monochrome, Deep Tone Monochrome, Portrait, Rich Tone Portrait, Landscape, Flat, Creative Picture Controls (Dream, Morning, Pop, Sunday, Somber, Dramatic, Silence, Bleached, Melancholic, Pure, Denim, Toy, Sepia, Blue, Red, Pink, Charcoal, Graphite, Binary, Carbon); selected Picture Control can be modified; storage for Custom Picture Controls *Note: Choice of Picture Controls is restricted to Standard, Monochrome, and Flat when HLG is selected for tone mode during still photography.
Storage media	SD (Secure Digital), and UHS-II compliant SDHC and SDXC memory cards
File system	DCF 2.0, Exif 2.32, MPEG-A MIAF
Viewfinder	1.0-cm/0.39-in. approx. 2360k-dot (XGA) OLED electronic viewfinder with color balance and auto and 13-level manual brightness controls
Viewfinder frame coverage	Approx. 100% horizontal and 100% vertical
Viewfinder magnification	Approx. 1.02× (50 mm lens at infinity, -1.0 m ⁻¹)
Monitor	8-cm/3.2-in., approx. 1040k-dot vari-angle TFT touch-sensitive LCD with 170° viewing angle, approximately 100% frame coverage, and color balance and 13-level manual brightness controls
Shutter type	Electronically-controlled vertical-travel focal-plane mechanical shutter; electronic front-curtain shutter; electronic shutter
Shutter speed	1/4000 – 30 s (choose from step sizes of 1/3, 1/2, and 1 EV, extendable to 900 s in mode M), bulb, time
Flash sync speed	Flash synchronizes with shutter at speeds of 1/250 or 1/200 s or slower (but note that the guide number drops at speeds of 1/200 to 1/250 s); sync speeds as fast as 1/4000 s are supported with auto FP high-speed sync
Release modes	Single frame, continuous low-speed, continuous high-speed, continuous high-speed (extended), high-speed frame capture + with Pre-Release Capture, self-timer
Approximate frame advance rate	<ul style="list-style-type: none"> Continuous low-speed: Approx. 1 – 5 fps Continuous high speed: Approx. 5.6 fps (when using silent mode and image quality settings other than NEF (RAW) and NEF (RAW) +: approx. 9.7 fps) Continuous high speed (extended): Approx. 11 fps (with electronic shutter: Approx. 15 fps) High-speed frame capture + (C15): Approx. 15 fps High-speed frame capture + (C30): Approx. 30 fps *Maximum frame advance rate as measured by in-house tests.
Exposure metering system	TTL metering using camera image sensor
Exposure metering modes	<ul style="list-style-type: none"> Matrix metering Centre-weighted metering: Weight of 75% given to 8 or 6 mm circle in centre of frame or weighting can be based on average of entire frame Spot metering: Meters circle with a diameter of approximately 3.5 mm centred on selected focus point Highlight-weighted metering
Metering range (ISO 100 equivalent, f/2.0, 20°C/68°F)	-4 – +17 EV
ISO sensitivity (Recommended Exposure Index)	ISO 100–51200 (choose from step sizes of 1/5 and 1 EV); can also be set to approx. 0.3, 0.7, or 1 EV (ISO 204800 equivalent) above ISO 51200; auto ISO sensitivity control available *Note: ISO sensitivity is limited to 400–51000 when HLG is selected for tone mode.
Active D-Lighting	Can be selected from Auto, Extra high, High, Normal, Low, and Off
Multiple exposure	Add, average, lighten, darken
Other exposure options	HDR overlay, photo mode flicker reduction, high-frequency flicker reduction
Autofocus type	Hybrid phase-detection/contrast AF with AF assist
AF detection range (in photo mode, AF-S, ISO 100 equivalent, f/2.0, 20°C/68°F)	-9 – +19 EV
Lens servo	<ul style="list-style-type: none"> Autofocus (AF): Single-servo AF (AF-S), continuous-servo AF (AF-C), AF mode auto-switch (AF-A, photo mode only), full-time AF (AF-F, video mode only), predictive focus tracking Manual focus (M): Electronic rangefinder can be used
Focus points	209 focus points (single-point AF), 231 focus points (auto-area AF)
AF-area modes	Pinpoint (available in photo mode only), single-point, dynamic-area (S, M, and L; available in photo mode only), wide-area (S, L, Cl, and C2), and auto-area AF; 3D-tracking (available in photo mode only); subject-tracking AF (available in video mode only)
Focus lock	Focus can be locked by pressing shutter-release button halfway (single-servo AF/AF-S) or by pressing the AF-ON button
Built-in flash	Manual pop-up flash raised via flash pop-up control Guide Number: Approx. 7/22, 7/22 with manual flash (m/ft, ISO 100, 20 °C/68 °F)

Charging time	Approx. 3 s
Flash control	TTL: i-TTL flash control; i-TTL balanced fill-flash is used with matrix, centre-weighted, and highlight-weighted metering, standard i-TTL fill-flash with spot metering
Flash modes	Fill flash, red-eye reduction, slow sync, slow sync + red-eye, rear-curtain sync, auto, auto + red-eye reduction, auto slow sync, auto slow sync + red-eye, flash off
Flash compensation	-3 – +1 EV (choose from step sizes of 1/3 and 1/2 EV)
Flash-ready indicator	Lights when built-in flash or optional flash unit is fully charged; flashes as underexposure warning after flash is fired at full output
Accessory shoe	ISO 518 hot-shoe with sync and data contacts and safety lock
Nikon Creative Lighting System (CLS)	i-TTL flash control, optical Advanced Wireless Lighting, FV lock, Color Information Communication, auto FP high-speed sync
White balance	Auto (3 types), natural light auto, direct sunlight, cloudy, shade, incandescent, fluorescent (3 types), flash, choose colour temperature (2500–10,000 K), preset manual (up to 6 values can be stored), all with fine-tuning
Bracketing type	Exposure and/or flash, white balance, and ADL
Other options for still photography	Vignette control, diffraction compensation, auto distortion control, skin softening, portrait impression balance, and interval-timer, and focus-shift photography
Video metering system	TTL metering using camera image sensor
Video metering modes	Matrix, centre-weighted, or highlight-weighted
Frame size (pixels) and frame rate	<ul style="list-style-type: none"> 3840 × 2160 (4K UHD): 60p/50p/30p/25p/24p 1920 × 1080: 120p/100p/60p/50p/30p/25p/24p 1920 × 1080 (slow-motion): 30p × 4/25p × 4/24p × 5 *Note: Actual frame rates for 120p, 100p, 60p, 50p, 30p, 25p, and 24p are 119.88, 100, 59.94, 50, 29.97, 25, and 23.976 fps respectively.
File format	MOV, MP4
Video compression	H.265/HEVC (8 bit/10 bit), H.264/AVC (8 bit)
Audio recording format	Linear PCM (48 KHz, 24 bit, for videos recorded in MOV format) or AAC (48 KHz, 16 bit, for videos recorded in MP4 format)
Audio recording device	Built-in stereo or external microphone can be used; sensitivity adjustable; attenuator, frequency response, and wind noise reduction functions
Exposure compensation	-3 – +3 EV (choose from step sizes of 1/3 and 1/2 EV)
ISO sensitivity (Recommended Exposure Index)	<ul style="list-style-type: none"> Mode M: Manual selection (ISO 100–25600; choose from step sizes of 1/6, 1/3 and 1 EV); auto ISO sensitivity control (ISO 100–25600) available with selectable upper limit *Note: ISO sensitivity is limited to 400–25600 when HLG is selected for tone mode. *Note: ISO sensitivity is limited to Lo 0.3–2.0 and 800–25600 when N-Log is selected for tone mode. Modes P, S, A: Auto ISO sensitivity control (ISO 100–25600) with selectable upper limit Modes B, SCN: Auto ISO sensitivity control (ISO 100–25600)
Active D-Lighting	Can be selected from Extra high, High, Normal, Low, and Off
Other video options	Time-lapse video recording, electronic vibration reduction, time codes, REC lamp, N-Log and HDR (HLG) video, wave-form display, red REC frame indicator, video recording display zoom (50%, 100%, 200%, and 400%), extended shutter speeds (modes S and M), option to view video recording info available via z menu, and Hi-Res Zoom
Playback	Full-frame and thumbnail (up to 4, 9, or 72 pictures) playback with playback zoom, playback zoom cropping, video playback, slide shows, histogram display, highlights, photo information, location data display, auto picture rotation, picture rating, filtered playback, voice memo recording and playback, IPTC information embedding and display, skip to first shot in series, series playback, save consecutive frames, and motion blend
USB	Type C SuperSpeed USB connector; connection to built-in USB ports is recommended
HDMI output	Type D HDMI connector
External Audio input	Stereo mini-pin jack (3.5 mm diameter; plug-in power supported)
Audio output/remote cord	<ul style="list-style-type: none"> Stereo mini-pin jack (3.5 mm diameter) MC-DC3 Remote Cord can be used *Auto switch between headphone and remote cord is available.
Wi-Fi	Available
Bluetooth	Available
Battery	One EN-EL25a Rechargeable Li-ion Battery* * EN-EL25 batteries can also be used. Note, however, that fewer pictures can be taken on a single charge than with the EN-EL25a. Cable required
AC adapter	EH-8P AC Adapters (available separately); supplied UC-E25 USB Cable required
Tripod socket	0.635 cm (1/4 in., ISO 1222)
Dimensions (W×H×D)	Approx. 127 × 96.8 × 66.5 mm/5 × 3.9 × 2.7 in.
Weight	Approx. 550 g (1 lb. 3.4 oz.) with battery and memory card but without body cap and accessory shoe cover; approx. 495 g/1 lb. 1.5 oz. (camera body only)
Operating environment	Temperature: 0 °C – 40 °C (+32 °F – 104 °F); Humidity: 85% or less (no condensation)
Supplied accessories (may differ by country or area)	EN-EL25a Rechargeable Li-ion Battery, AN-DC29 Strap, UC-E25 USB Cable, BF-N1 Body Cap

*1 Supplied accessories *2 Non-Nikon products *3 Collaborating accessory manufacturers *4 When connecting with iPhones, use the Anker's USB-C to Lightning Accessory Cable or UC-E25. When connecting with Android devices, use the UC-E25 or a USB cable with the appropriate connectors for the camera and your smartphone on the market. *5 Can be downloaded from the application store of each smart device (free). Full functions of the NX MobileAir are available with charge. *6 Available regions and languages are limited. *7 Nikon's Nikon Imaging Cloud can be used in a web browser of the computer or smart device. Register your camera with Nikon Imaging Cloud to access services. *8 Can be downloaded from Nikon website (free).

• The SD, SDHC, and SDXC logos are trademarks of SD-3C, LLC.
 • HDMI, the HDMI logo and High-Definition Multimedia Interface are trademarks or registered trademarks of HDMI Licensing LLC.
 • Wi-Fi® and the Wi-Fi logo are trademarks or registered trademarks of the Wi-Fi Alliance®.
 • The Bluetooth® word mark and logos are registered trademarks owned by Bluetooth SIG, Inc. and any use of such marks by Nikon Corporation is under license.
 • Powered by IntPIX technology.
 • Apple is a trademark of Apple Inc. registered in the U.S. and/or other countries.
 • Other products and brand names are trademarks or registered trademarks of their respective companies.
 • Images in viewfinders, on LCDs and monitors shown in this material are simulated.



 **WARNING** TO ENSURE CORRECT USAGE, READ MANUALS CAREFULLY BEFORE USING YOUR EQUIPMENT. SOME DOCUMENTS CAN BE DOWNLOADED FROM downloadcenter.nikonimglib.com.

Specifications and equipment are subject to change without any notice or obligation on the part of the manufacturer. November 2024 © 2024 Nikon Corporation



Nikon Singapore Pte. Ltd. 18 Tai Seng Street, #04-08, 18 Tai Seng, Singapore 539775 www.nikon.com.sg
Nikon Hong Kong Ltd. Unit 2001, Level 20, Tower II, Grand Century Place, 193 Prince Edward Road West, Mongkok, Kowloon, Hong Kong www.nikon.com.hk
Nikon Australia Pty Ltd. Suite 501, Level 5, 5 Rider Boulevard, Rhodes, NSW 2138, Australia www.nikon.com.au
Nikon India Private Limited Plot No. 71, Sector 32, Institutional Area, Gurgaon 122001, Haryana, India (CIN-U74999HR2007FTC036820) www.nikon.co.in
Nikon Sales (Thailand) Co., Ltd. 1 Empire Tower, 45th Floor, River Wing East, South Sathorn Rd, Yannawa, Sathorn, Bangkok 10120, Thailand www.nikon.co.th
Nikon Middle East FZE Level 14, Jafza Views 19, P.O. Box 261908, Dubai, UAE www.nikon-me.com
NIKON CORPORATION 1-5-20, Nishi-1, Shinagawa-ku, Tokyo 140-8601, Japan www.nikon.com

 @nikonasia  @nikonasia



En