



MAKE IT ICONIC

Zf

SEE. FEEL. CREATE.

How you see the world
And how you show yourself to the world —
They both express who you are.
It makes a statement.
It's your unique take that makes your images special.
It's a celebration of your point of view, your own uniqueness.

Embrace each trial and error.
That way, instead of following the others, you are creating your own path.
It's more than just finding a unique moment:
It's a richer process, full of inspiration, the feeling of satisfaction and pride
in making each of those moments more deeply your own.

You can go beyond limits,
And do your creative voice more justice.
Creativity means there are no wrong answers.

There's just you, expressing what's important:
your passion, your style, your voice
To be truly iconic.

Z f. Make it iconic.





The street is a theatre in monochrome

Something is evolving on the street. Watch carefully, and your eyes are naturally drawn to a unique, spontaneous moment. The sky is a beautiful bright blue, and the clouds are casting interesting shapes across the sky. Deep Tone Monochrome adds extra drama to the scene, making the blue sky darker. Pedestrians stop for a moment on the bridge — the stage looks set for a performance to begin. The details in the shadows are retained, even when silhouetted against the sky.

NIKKOR Z 40mm f/2 (SE)



The special edition heritage styling of the lens makes it a perfect match for the Z f, and being light and compact, it keeps you unobtrusive, which is key when shooting street scenes. The 40-mm angle of view allows you to easily control the busy background while depicting the context of the moment.



Lens: NIKKOR Z 17-28mm f/2.8 © Davide Anzimanni



Lens: NIKKOR Z 28-75mm f/2.8 © Davide Anzimanni

Anticipated moments. Serendipitous moments.

Immersed in the solemn atmosphere of the ancient remains, you look for your ideal composition. As the beautiful light of the sunrise casts the scene in a perfect patchwork of shadows, inspiration strikes. As if you knew the moment was coming, you ask your partner to stand in the optimal position to complete your composition. Travel is full of unexpected opportunities. Out for a stroll, you are suddenly greeted by a cat taking shade from the hot sun. Always with you, the Z f helps you capture each fleeting moment with the advanced AF and VR performance and lets you express it in your own voice.

NIKKOR Z 17-28mm f/2.8



NIKKOR Z 28-75mm f/2.8



This pair of lightweight zoom lenses share a constant f/2.8 aperture throughout the zoom range and fast, quiet AF operation. The NIKKOR Z 17-28mm f/2.8 packs a dramatic and dynamic wide-angle zoom range into a fixed overall lens length. Meanwhile, the NIKKOR Z 28-75mm f/2.8 covers a versatile standard zoom range, from elegant, sweeping landscapes to the watchful eyes of a street cat.

NIKKOR Z 24-70mm f/4 S
• Exposure: [M] mode, 1/125 second, f/6.3
• White balance: Shade
• Sensitivity: ISO 100
• Picture Control: Auto
© Lina Trinh



Lens: NIKKOR Z 35mm f/1.8 S
• Exposure: [M] mode, 1/1000 second, f/1.8
• White balance: Auto
• Sensitivity: ISO 3200
• Picture Control: Auto
© Lina Trinh



Lens: NIKKOR Z 85mm f/1.8 S
• Exposure: [M] mode, 1/400 second, f/2
• White balance: Auto
• Sensitivity: ISO 200
• Picture Control: Auto
© Michi Nakano



Different atmospheres as the light changes

Sunset into night is a time that makes images look poetic and cinematic. As I stroll along the river, I spot a ray of dusk sunlight hitting the entrance of a tunnel, with the shadows of passers-by casting interesting shapes as they approach. The golden hour can give a glow to something as seemingly mundane as this. After the sun goes down, the city gives off a different energy. A young girl stands in the street, backlit by a neon sign. Her phone screen reflects the light. My eye is drawn to this enigmatic scene, and I press the shutter quickly and quietly — so many stories to capture in just one evening.



NIKKOR Z 24-70mm f/4 S

With its versatile focal length range and high resolution, this lens gives you the flexibility to take breathtaking images in a variety of situations, including clear, sharp rendering even in backlit scenes.



NIKKOR Z 35mm f/1.8 S

With the adoption of the multi-focusing system, this lens delivers superb AF accuracy in a wide range of scenes. The fast f/1.8 maximum aperture works effectively in low-light situations while adding an aesthetic feel to the frame with natural and smooth bokeh.

Beauty in a private space

At home together on a quiet afternoon, a portrait session somehow naturally starts. Nothing staged or posed: just a portrait of her, the way she is. In every frame, from ever-so-slightly different angles, her face looks different, and each subtle change is its own little wonder. She is able to be herself without feeling the need to pose. This is because of the Z f's refined and unobtrusive design. The camera creates a true connection between me and my subject.



NIKKOR Z 85mm f/1.8 S

Dedicated to rendering beautiful bokeh, this lens offers arrestingly sharp focus from which a smooth gradation of bokeh flows between the foreground and the background for a mesmerising yet natural look.

+ EXPLORE. EXPERIMENT. BE ICONIC.

Go beyond your limits — the Z f is designed to support you wherever your creative exploration takes you, encouraging you to experiment. State-of-the-art imaging capabilities, achieved through the combination of the full-frame image sensor and EXPEED 7 image-processing engine, are encased in an iconic exterior design. This combination of style and power lets you discover new ways of expression and the possibilities they bring.



A person half in silhouette snapped spontaneously thanks to the AF that works even for backlit subjects.

Lens: NIKKOR Z 85mm f/1.8 S © Lina Trinh

A beautiful shot of dogs running captured using 3D-tracking, which keeps moving subjects in sharp focus.

Lens: NIKKOR Z 28-75mm f/2.8 © Soichi Hayashi



A dusky harbour before dawn. Everything in the picture is sharply reproduced, with a slow shutter speed set to 1/8 of a second. This is achieved with the in-camera vibration reduction providing an effect equivalent to a shutter speed of 8.0 stops faster*.

* Using the telephoto end of the NIKKOR Z 24-120mm f/4 S. Based on CIPA Standards.

Lens: NIKKOR Z 24-120mm f/4 S © Davide Anzimanni

You can keep tracking a moving subject from edge to edge in the frame thanks to the wide AF-area coverage.

Lens: NIKKOR Z 40mm f/2 (SE)
© Lina Trinh



AF subject detection is useful even to capture a small or distant person within an expansive landscape.

Lens: NIKKOR Z 40mm f/2 (SE)
© Davide Anzimanni



A low-light landscape with an off-centred subject comes out sharp and clear from a handheld camera thanks to the world's first*1 focus-point VR*2 that suppresses blur around the selected focus point, even when the subject is positioned at the edge of the frame.

*1 Based on Nikon research, as of 20th September 2023.

*2 Only in Photo mode when a NIKKOR Z lens without built-in VR is used. Does not operate when multiple focus points are displayed.

Lens: NIKKOR Z 24mm f/1.8 S
© Davide Anzimanni

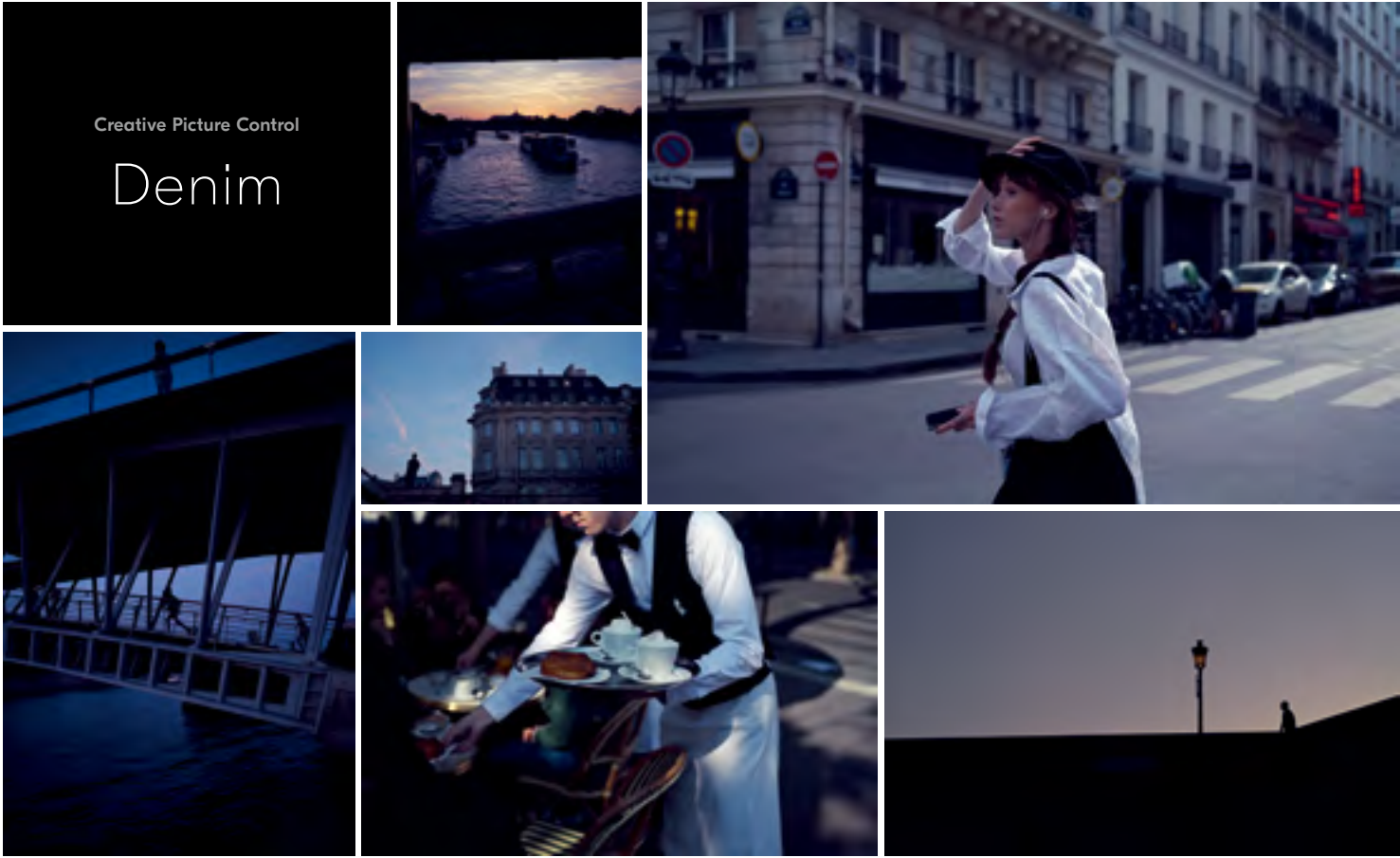
A decisive moment of a bird in flight, captured with Pre-Release Capture* that records one second prior to the actual shutter release timing.

* Pre-Release Capture can be set only when shooting with High-Speed Frame Capture+, which enables continuous shooting up to 30 frames per second.

Lens: NIKKOR Z 24-70mm f/4 S

+ EMOTION. EXPRESSION. YOUR VOICE.

Embrace trial and error. Be true to what you feel and your expression will become more distinctly your own. The Z f's Picture Controls and Creative Picture Controls help you show what you feel in different colours or beautiful monochrome tones to match the emotion you want to express. Finetuning the look is not only possible but easy and intuitive.



+ DESIGNED TO MAKE YOUR STATEMENT

The exterior design of the Z f is inspired by the Nikon FM2, a popular manual camera of the film era that brought the joy of shooting to a great many photographers. The Z f lets you make a statement; feel different, look different — it's a complete experience.



Switch the selector to B&W mode and instantly dive into the world of monochrome imaging.



A brass shutter-release button, power switch, and manual dials bring a comfortable and sophisticated operational feel.



A fully rotatable vari-angle LCD lets you expand your shooting angles.



The premium exteriors come in six different colours (Bordeaux Red, Indigo Blue, Moss Green, Sepia Brown, Stone Grey, and Sunset Orange), letting you express your own style.



GL x Nikon

The ultimate companion for creators on the move. The Gaston Luga x Nikon backpack is designed to securely transport all your Nikon gear, in a comfortable yet stylish way.



Made from a premium water-resistant material, the GL x Nikon backpack protect your photography gears under unexpected weather conditions. With six adjustable padded compartments, you can customise the interior to adapt to your needs.



+ REAL STORYTELLING IN DYNAMIC VIDEO

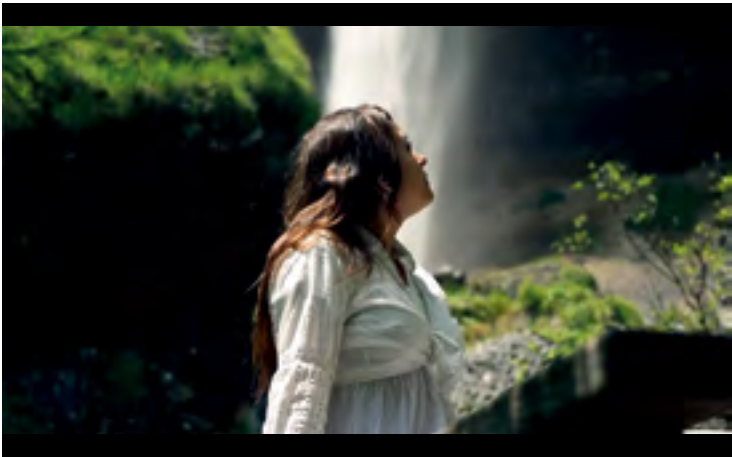
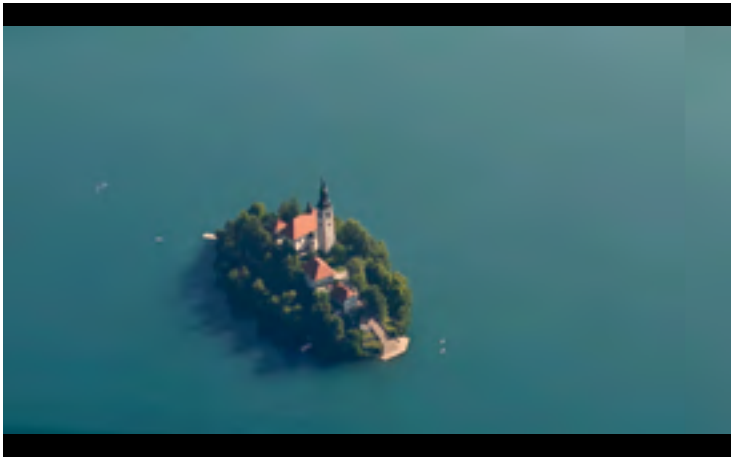
You can keep your video shoot as unobtrusive as possible with the Z f by not having to attach an external recorder — whether you want to shoot 10-bit 4K UHD N-Log and colour grade the footage in post or shoot 8-bit in ready-to-output SDR. The in-camera recording time runs to a maximum of up to 125 minutes*. You can shoot handheld or on a gimbal, and your story will come out sharp, smooth, and intimate.

* In 4K UHD, H.265 8-bit (MOV), [Auto temperature cutout]: [High], at 23°C/73°F, EN-EL15c Rechargeable Li-ion Battery, and USB power delivery. Use of recommended cards is advised.



The Z f offers high-quality video codecs, including 4K UHD oversampled from 6K and 10-bit H.265 in SDR/N-Log/HLG. It also offers a variety of functions to support full-scale video recording, such as a waveform monitor display and compatibility with a wide range of video accessories.*

* Only available for 4K UHD/30p/25p/24p video, in FX image area.



The optional MC-N10 Remote Grip allows complete control of your camera remotely via a USB connection, expanding what's possible on solo video shoots using a gimbal, slider, etc.

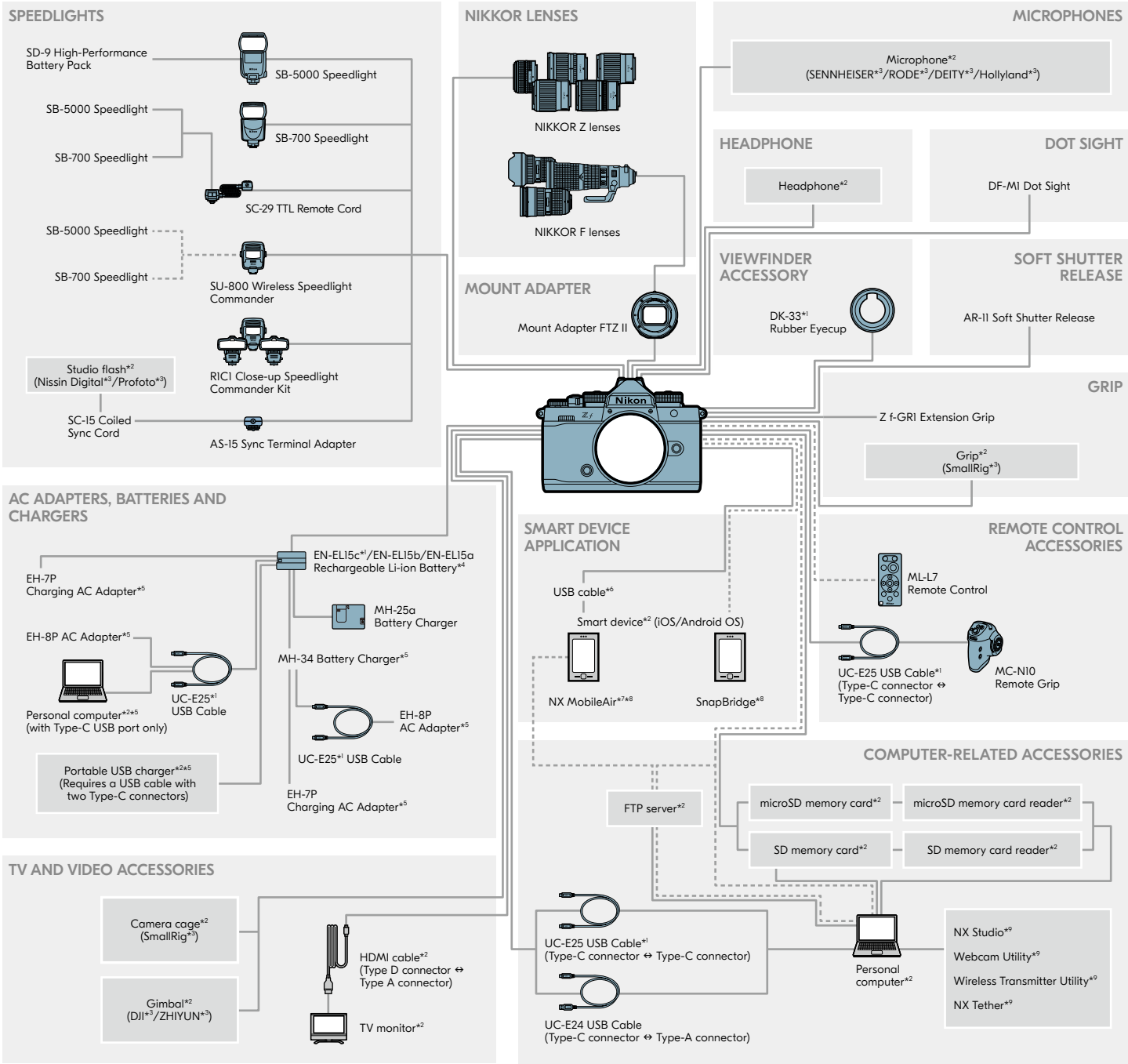


Get stable handheld video footage with electronic VR (Vibration Reduction) combined with 5-axis image-sensor shift VR.



10-bit N-Log preserves more image data and dynamic range, letting you push the colours more in post to get the exact look you want.

SYSTEM CHART



*1 Supplied accessories *2 Non-Nikon products *3 Collaborating accessory manufacturers *4 Only EN-EL15c/EN-EL15b batteries support USB charging. *5 Cannot be used to charge EN-EL15a battery. *6 When connecting with iPhones, use the Anker's USB-C to Lightning Accessory Cable. When connecting with Android devices, use the UC-E25 or a USB cable with the appropriate connectors for the camera and your smartphone on the market. *7 Available regions and languages are limited. *8 Can be downloaded from the application store of each smart device (free). Full functions of the NX MobileAir are available with charge. *9 Can be downloaded from Nikon website (free).

UNLIMITED IMAGING POSSIBILITIES

Lenses are the decisive factor in image creation. NIKKOR Z offers a diverse lineup of prime and zoom lenses, now covering the focal range from 14mm to 1600mm*, with clear and tack-sharp rendering performance at the maximum aperture. NIKKOR Z lenses also allow for silent operation and minimize focus breathing.

*When using a teleconverter

NIKKOR Z



SPECIFICATIONS

Type of camera	Digital camera with support for interchangeable lenses
Lens mount	Nikon Z mount
Compatible lenses	• Z mount NIKKOR lenses • F mount NIKKOR lenses (mount adapter required; restrictions may apply)
Effective pixels	24.5 million
Image sensor	35.9 × 23.9 mm CMOS sensor (full-frame/FX-format)
Total pixels	25.28 million
File format (image quality)	• NEF (RAW): 14 bit with lossless compression, high-efficiency★ and high-efficiency options • JPEG: JPEG-Baseline compliant with fine (approx. 1:4), normal (approx. 1:8), or basic (approx. 1:16) compression; size-priority and optimal-quality compression available • HEIF: Supports fine (approx. 1:4), normal (approx. 1:8), or basic (approx. 1:16) compression; size priority and optimal-quality compression available • NEF (RAW)+JPEG: Single photograph recorded in both NEF (RAW) and JPEG formats • NEF (RAW)+HEIF: Single photograph recorded in both NEF (RAW) and HEIF formats
Picture Control System	Auto, Standard, Neutral, Vivid, Monochrome, Flat Monochrome, Deep Tone Monochrome, Portrait, Rich Tone Portrait, Landscape, Flat, Creative Picture Controls (Dream, Morning, Pop, Sunday, Somber, Dramatic, Silence, Bleached, Melancholic, Pure, Denim, Toy, Sepia, Blue, Red, Pink, Charcoal, Graphite, Binary, Carbon); selected Picture Control can be modified; storage for custom Picture Controls
Storage media	SD (Secure Digital) memory cards, UHS-II compliant SDHC and SDXC memory cards, and microSD memory cards, UHS-I compliant microSDHC and microSDXC memory cards
Dual card slots	Either card can be used for overflow or backup storage, for separate storage of NEF (RAW) and JPEG or HEIF pictures, or for storage of duplicate JPEG or HEIF pictures at different sizes and image qualities; pictures can be copied between cards
Viewfinder	1.27-cm/0.5-in. approx. 3690k-dot (Quad VGA) OLED electronic viewfinder with colour balance, auto and 13-level manual brightness controls
Viewfinder frame coverage	Approx. 100% horizontal and 100% vertical
Viewfinder magnification	Approx. 0.8× (50 mm lens at infinity, −1.0 m ⁻¹)
Monitor	8-cm/3.2-in., approx. 2100k-dot vari-angle TFT touch-sensitive LCD with 170° viewing angle, approx. 100% frame coverage, and colour balance and 15-level manual brightness controls
Shutter type	Electronically-controlled vertical-travel focal-plane mechanical shutter; electronic front-curtain shutter; electronic shutter
Shutter speed	• Accessible via shutter speed dial: 1/8000 to 4 s in steps of 1 EV, bulb, time, X (flash sync) • Accessible via main command dial: 1/8000 to 30 s in steps of 1/3 EV (extendable to 900 s in mode M), bulb, time, X (flash sync)
Release modes	Single frame, continuous low-speed, continuous high-speed, continuous high-speed (extended), high-speed frame capture with Pre-Release Capture, self-timer
Approximate frame advance rate (measured by in-house tests)	• Continuous L: Approx. 1 to 7 fps • Continuous H: Approx. 7.8 fps • Continuous H (extended): Approx. 14 fps • High-Speed Frame Capture+ (C30): Approx. 30 fps
Exposure metering system	TTL metering using camera image sensor
Exposure metering modes	• Matrix metering • Center-weighted metering: Weight of 75% given to 12- or 8-mm circle in center of frame or weighting can be based on average of entire frame • Spot metering: Meters circle with a diameter of approx. 4 mm centered on selected focus point • Highlight-weighted metering
Metering range (ISO 100, f/2.0, 20°C/68°F)	−4 to +17 EV
ISO sensitivity (Recommended Exposure Index)	ISO 100 to 64000 in steps of 1/3 or 1 EV; can also be set to approx. 0.3, 0.7 or 1 EV (ISO 50 equivalent) below ISO 100 or to approx. 0.3, 0.7, 1 or 1.7 EV (ISO 204800 equivalent) above ISO 64000; auto ISO sensitivity control available; ISO sensitivity is limited to 400 to 64000 when HLG is selected for tone mode
Active D-Lighting	Can be selected from Auto, Extra high, High, Normal, Low, and Off
Autofocus type	Hybrid phase-detection/contrast AF with AF assist
AF detection range (in photo mode, AF-S, ISO 100, f/1.2, 20°C/68°F)	−10 to +19 EV
Lens servo	• Autofocus (AF): Single-servo AF (AF-S); continuous-servo AF (AF-C); full-time AF (AF-F, available only in video mode); predictive focus tracking • Manual focus (M): Electronic rangefinder can be used
Focus points (in photo mode, FX format, single-point AF)	273 points
AF-area modes	Pinpoint (available in photo mode only, single-point, dynamic-area (S, M, and L; available in photo mode only, wide-area (S, L, CL, and C2), and auto-area AF; 3D-tracking (available in photo mode only); subject-tracking AF (available in video mode only)

Camera on-board VR	5-axis image sensor shift
Lens on-board VR	Lens shift (available with VR lenses)
Flash control	TTL: i-TTL flash control; i-TTL balanced fill-flash is used with matrix, center-weighted, and highlight-weighted metering, standard i-TTL fill-flash with spot metering
Flash modes	Front-curtain sync, slow sync, rear-curtain sync, red-eye reduction, red-eye reduction with slow sync, off
Nikon Creative Lighting System (CLS)	i-TTL flash control, optical Advanced Wireless Lighting, modeling illumination, FV lock, Color Information Communication, auto FP high-speed sync
White balance	Auto (3 types), natural light auto, direct sunlight, cloudy, shade, incandescent, fluorescent (3 types), flash, choose colour temperature (2500 to 10000 K), preset manual (up to 6 values can be stored), all with fine-tuning
Bracketing type	Exposure and/or flash, white balance, and ADL
Video metering modes	Matrix, center-weighted or highlight-weighted
Frame size (pixels) and frame rate	• 3840 × 2160 (4K UHD); 60p/50p/30p/25p/24p • 1920 × 1080, 120p, 100p, 60p, 50p, 30p, 25p, 24p
File format	MOV, MP4
Video compression	H.265/HEVC (8/10 bit), H.264/AVC (8 bit)
Audio recording format	Linear PCM (48 KHz, 24 bit, for videos recorded in MOV format) or AAC (48 KHz, 16 bit, for videos recorded in MP4 format)
Audio recording device	Built-in stereo or external microphone with attenuator option; sensitivity adjustable
Exposure compensation	−3 to +3 EV in steps of 1/3 EV
ISO sensitivity (Recommended Exposure Index)	• M mode: Manual selection (ISO 100 to 51200 in steps of 1/6, 1/3 or 1 EV); with additional options available equivalent to approx. 0.3, 0.7, 1 or 2 EV (ISO 204800 equivalent) above ISO 51200; auto ISO sensitivity control (ISO 100 to Hi 2.0) available with selectable upper limit • P, S or A mode: Auto ISO sensitivity control (ISO 100 to High 2.0) with selectable upper limit • mode: Auto ISO sensitivity control (ISO 100-51200); ISO sensitivity is limited to 400 to 51200 when HLG is selected for tone mode
Other video options	Time-lapse video recording, electronic vibration reduction, time codes, N-Log and HDR (HLG) video, wave-form display, red REC frame indicator, video recording display zoom (50%, 100%, and 200%), extended shutter speeds (mode S and M); option to view recording info available via menu
Playback	Full-frame and thumbnail (up to 4, 9, or 72 pictures) playback with playback zoom, playback zoom cropping, video playback, slide shows, histogram display, highlights, photo information, location data display, auto picture rotation, picture rating, voice memo recording and playback, IPTC information embedding and display, filtered playback, skip to first shot in series, series playback, save consecutive frames, and motion blend
USB	Type-C SuperSpeedUSB connector; connection to built-in USB ports is recommended
HDMI output	Type D HDMI connector
Audio input	Stereo mini-pin jack (3.5 mm diameter; plug-in power supported)
Audio output	Stereo mini-pin jack (3.5 mm diameter)
Ten-pin remote terminal	N/A
Wi-Fi	Available
Bluetooth	Available
Battery	One EN-EL15c Rechargeable Li-ion Battery; EN-EL15b and EN-EL15a batteries can be used in place of the EN-EL15c. Note that fewer pictures can be taken on a single charge than with the EN-EL15c. EH-8P AC Adapters can be used to charge EN-EL15c and EN-EL15b batteries only
AC adapter	• EH-7P Charging AC Adapter (available separately) • EH-8P AC Adapters (available separately); supplied UC-E25 USB Cable required
Tripod socket	0.635 cm (1/4 in., ISO 1222)
Dimensions (W × H × D)	Approx. 144 × 103 × 49 mm/5.7 × 4.1 × 2 in.
Weight	Approx. 710 g/1 lb. 9.1 oz. with battery and memory card but without body cap and accessory shoe cover; approx. 630 g/1 lb. 6.3 oz. (camera body only)
Operating environment	Temperature: 0 to 40°C/+32 to 104°F; Humidity: 85% or less (no condensation)
Supplied accessories (may differ by country or area)	EN-EL15c Rechargeable Li-ion Battery, DK-33 Rubber Eyecup, UC-E25 USB Cable, AN-DC27 Strap, BF-N1 Body Cap, BS-1 Accessory Shoe Cover

• The SD, SDHC, SDXC, microSD, microSDHC, and microSDXC logos are trademarks of SD-3C, LLC. • Wi-Fi® and the Wi-Fi logo are trademarks or registered trademarks of the Wi-Fi Alliance®. • The Bluetooth® word mark and logos are registered trademarks owned by Bluetooth SIG, Inc. and any use of such marks by Nikon Corporation is under license. • Other products and brand names are trademarks or registered trademarks of their respective companies. • Images in viewfinders, on LCDs and monitors shown in this material are simulated. • Nikon reserves the right to change the appearance and specifications of the hardware and software described in this material at any time and without prior notice.



WARNING

TO ENSURE CORRECT USAGE, READ MANUALS CAREFULLY BEFORE USING YOUR EQUIPMENT. SOME DOCUMENTS CAN BE DOWNLOADED FROM downloadcenter.nikonimglib.com.

Specifications and equipment are subject to change without any notice or obligation on the part of the manufacturer. September 2023 © 2023 Nikon Corporation



Nikon Singapore Pte. Ltd. 18 Tai Seng Street, #04-08, 18 Tai Seng, Singapore 539775 www.nikon.com.sg
Nikon Hong Kong Ltd. Unit 2001, Level 20, Tower II, Grand Century Place, 193 Prince Edward Road West, Mongkok, Kowloon, Hong Kong www.nikon.com.hk
Nikon Australia Pty Ltd. Suite 501, Level 5, 5 Rider Boulevard, Rhodes, NSW 2138, Australia www.nikon.com.au
Nikon India Private Limited Plot No. 71, Sector 32, Institutional Area, Gurgaon 122001, Haryana, India (CIN-U74999HR2007FTC036820) www.nikon.co.in
Nikon Sales (Thailand) Co., Ltd. 1 Empire Tower, 45th Floor, River Wing East, South Sathorn Rd, Yannawa, Sathorn, Bangkok 10120, Thailand www.nikon.co.th
Nikon Middle East FZE Level 14, Jafza Views 19, P.O. Box 261908, Dubai, UAE www.nikon-mea.com
NIKON CORPORATION Shingawa Intercity Tower C, 2-15-3, Konan, Minato-ku, Tokyo 108-6290, Japan www.nikon.com

@nikonasia @nikonasia





The story behind the Z f

The heart of the Nikon Z f is “fusion” — an idea embedded in the name.

It represents the fusion of past, present, and future. With its iconic exterior design, the Z f links over 70 years of Nikon’s heritage of innovation and precision craftsmanship with cutting-edge full-frame mirrorless technology. The “f” also signifies models with symbolic importance in Nikon’s history. Everything about the Z f works to foster an authentic experience with advanced technology, providing you with the creative freedom to experience each moment more deeply in your own way.