



# Z 6 II



TRUE MULTIMEDIA POWERHOUSE





## UNPARALLELED STILLS AND VIDEOS WITH NIKKOR Z IN DIVERSE, CHALLENGING SCENARIOS

An electrifying moment in a dramatic image. Cinematic 4K UHD videos that immerse viewers in another world. The new Nikon Z 6II, powered by NIKKOR Z, lets you create both with more confidence. Dual EXPEED 6 image-processing engines allow continuous shooting at approx. 14 fps up to approx. 124 shots<sup>\*1</sup>. Eye-Detection and Animal-Detection AF are available in both stills and videos. A variety of video recording options now includes 10-bit HDR (HLG) and 4K UHD/50p/60p<sup>\*2</sup>. What's more, the dual memory card slots and new optional MB-N11 Power Battery Pack give you all this versatility in a dependable package. The Z 6II provides a solid hybrid solution for multimedia creators.

<sup>\*1</sup> In high-speed continuous shooting (extended) using single-point AF with 12-bit lossless compressed RAW (L) with Sony CEB-G128 CFexpress card in use.

<sup>\*2</sup> To be supported from February 2021 with firmware update, available in DX-based movie format.

**Z 6II** **FX** **Dual EXPEED 6** **4K UHD**



# VERSATILITY, QUALITY, AND FREEDOM IN CINEMATIC MOTION

## Obtain rich colours with external recording

- 10-bit N-Log records rich gradation information, capturing up to approx. 1.07 billion colours as well as a wide dynamic range at 12 stops and 1300%, enabling effective color grading.
- The Hybrid Log Gamma (HLG) is convenient for producing HDR videos for HLG monitors.
- 12-bit RAW video output\* (a feature found in high-end video cameras) provides maximum flexibility in post-processing.
- Available in both 4K UHD and Full HD using ATOMOS Ninja V or Blackmagic Video Assist 12G HDR Recorders.

\* Requires optional paid upgrade - <https://nikn.ly/RawInfo>

After colour grading



N-Log

Z 6II with Atomos Ninja V  
(SmallRig Cage for Nikon Z 6II/Z 7II  
Camera 2926 is recommended.)



## Effortless grading with Picture Controls

- Cut down on post production and add a creative twist with 20 in-camera Picture Control presets.
- Colour enhancement is made easy when using Picture Control Flat that captures footage with as much colour, texture and brightness information retained as possible.

## Fully customisable AF control

- Achieve cinematic videos by adjusting the speed\* and tracking sensitivity of AF.
- AF speed is adjustable in 11 steps, between “Slow” (-5) and “Fast” (+5).
- AF tracking sensitivity can be adjusted in seven steps, from “High” (1) to “Low” (7).

\* When using NIKKOR Z lenses and some NIKKOR F lenses.

## Record clear videos even under low light

- Produce mesmerising 4K UHD videos via full-frame, 6K-equivalent of rich data and superior video-optimised NIKKOR Z lenses.
- Record stunning 4K UHD/50p or 60p with firmware update\*1
- Record in Full HD/120p or 100p\*2 for smooth, dramatic slow motion footage.
- ISO 100-51200 offers clear images with minimum noise reducing the need for additional lighting.

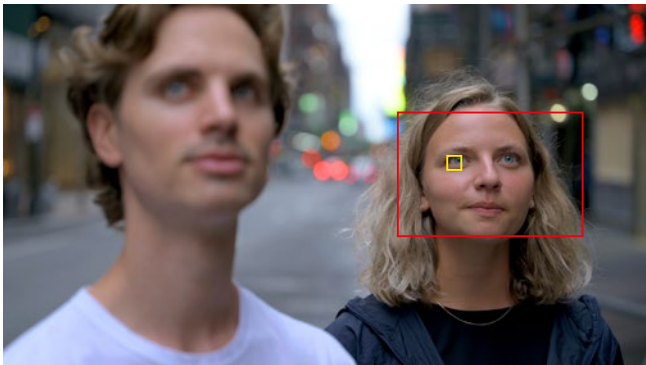


\*1 Scheduled in February 2021, available in DX-based movie format.  
\*2 Not available with HDMI output.

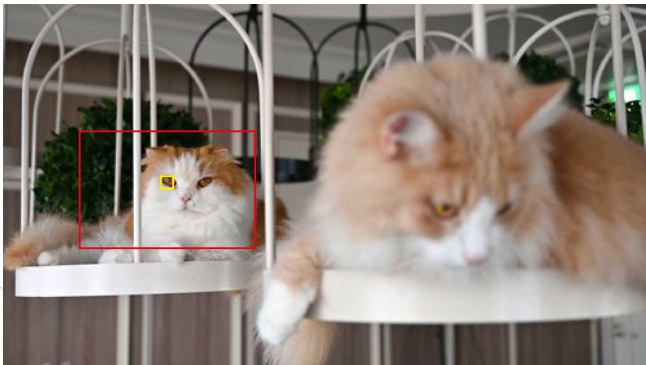


## More convenient, reliable video AF

- Enhanced with Eye- and Animal-Detection AF that stay on your subject even when they're in motion.
- Available in wide -area AF (L), which allows you to capture your intended subject in a busy frame.



Eye-Detection AF in wide-area AF (L – people)



Animal-Detection AF in wide-area AF (L – animal)

## Automatic in-camera time-lapse movie generation

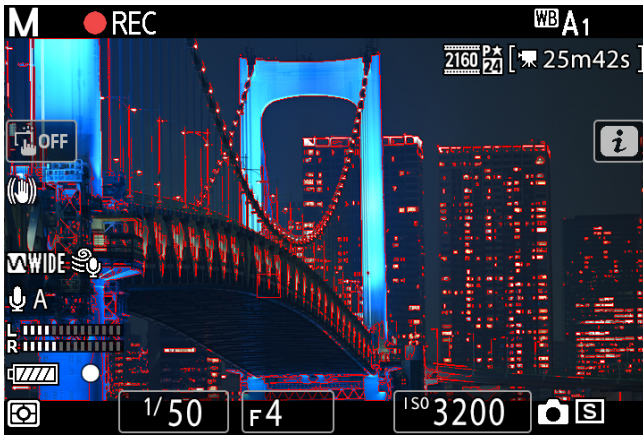
- Capture high resolution materials for time-lapse production conveniently with interval-timer photography.
- Produce a time-lapse movie up to 4K UHD in-camera and on-site with reduced subtle exposure variations between frames, powered by Nikon's unique exposure smoothing function so you get great results for quick sharing.
- When used together with silent photography, the camera's exposure metering capability is extended beyond -4 EV\*, so creators can capture scenes where brightness changes significantly—all in one continuous sequence using aperture-priority auto exposure mode.

\* In still shooting at f/2.0, ISO 100, 20°C/68°F.

## More support for high-end video production

- A recorded time code enables you to combine footage from different cameras\*.
- In manual focusing, focus peaking is available even in 4K UHD, with selectable peaking highlight colour.

\* Not available when shooting slow-motion movies.





# UNBOUND BY LIMITATIONS

## Capture quick moments effortlessly

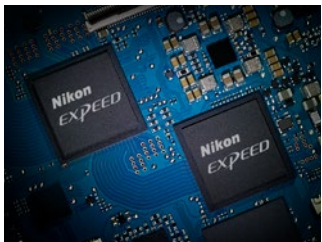
- Thanks to dual EXPEED 6 image-processing engines, the maximum continuous shooting speed is now approx. 14 fps\*1 with AE/AF tracking.
- Continuous shooting up to 124 frames\*2 in 12-bit lossless compressed RAW (L) – meaning 14-fps shooting is maintained up to 9 seconds with the camera's extended buffer.

\*1 In high-speed continuous shooting (extended), with single-point AF. Approx. 12 fps when using silent photography or AF-C with AF area modes other than single-point AF.

\*2 With Sony CEB-GI28 CFexpress card in use.



• Lens: NIKKOR Z 24-70mm f/4 S • Exposure: [M] mode, 1/2000 s, f/5  
• White balance: Auto 1 • Sensitivity: ISO 1600  
• Creative Picture Control: Sombre © Kento Mori



**Dual EXPEED 6**

## Freeze motion in the blink of an eye

- Capture defining shots in a sequence of fleeting moments with High-Speed Frame Capture.
- 2-megapixel images at up to 120 fps\*1 or 8-megapixel images at up to 30 fps\*2 with AE/AF tracking.

\*1 With Full HD selected for movie image quality.

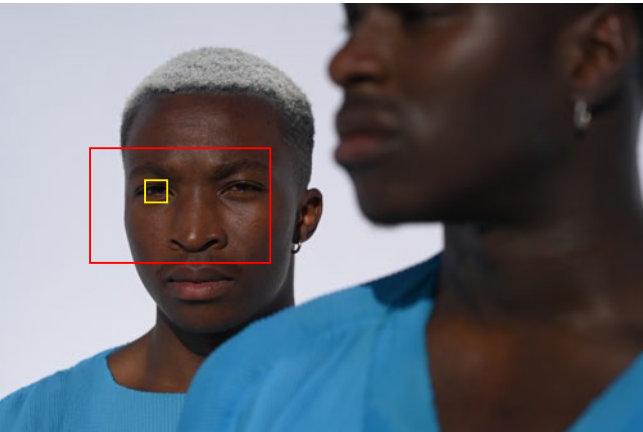
\*2 With 4K UHD selected for movie image quality.

## Improved functions help focus on the intended subject

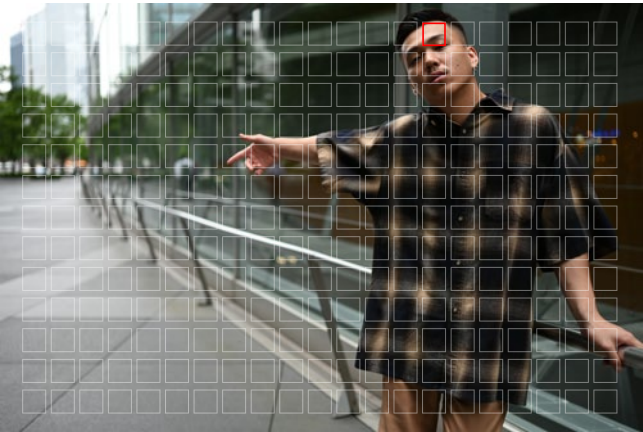
- Even in busy scenes, you can focus on your subject more easily with the enhanced 273-point hybrid AF system.
- Eye- and Animal-Detection AF are now available in wide-area AF (L) as well as auto-area AF.
- The Z 6II saves the last focus position when switched off, so you can resume your shoot right where you left off\*1.
- Shoot in dimly-lit areas with low-light AF that enables autofocusing down to -6 EV\*2.
- Get superb AF accuracy when paired with NIKKOR Z lenses.

\*1 When "on" is selected for "save focus position" in the setup menu.

\*2 Using AF-S at f/2.0, ISO 100 and 20°C/68°F with the center focus point selected in the singlepoint AF.



Eye-Detection AF in wide-area AF (L — people)



273-point hybrid AF system

## Increased focusing control

- Capture a moving human subject continuously with Eye-Detection AF, face-detection and upper body detection technologies effortlessly, even if they temporarily turn their back.
- Photograph cats and dogs effortlessly with Animal-Detection AF.
- Eye- and Animal-Detection AF are available in wide-area AF (L), so you can easily focus on your intended subject within the focus area.



Animal-Detection AF in wide-area AF (L — animal)

## Exceptional image quality, even under low light

- Capture razor sharp and stunning images with 24.5 megapixels.
- Get a wide standard sensitivity range of ISO 100-51200 (expandable to ISO 50-204800 equivalent) with the FX-format backside illumination CMOS sensor and dual EXPEED 6 image-processing engine.



• Lens: NIKKOR Z 50mm f/1.8 S • Exposure: [M] mode, 1/3200 s, f/2 • White balance: Color Temp. (3200K) • Sensitivity: ISO 6400 • Picture Control: Auto © Ronan McKenzie

## Flexible long exposure photography

- With the maximum shutter speed setting is extended from 30 s to 900 s\*
- You can now shoot longer exposures with a single press of the shutter-release button.

\* In M mode when "on" is selected for "extended shutter speeds (M)" in custom settings.



• Lens: NIKKOR Z 24-70mm f/4 S • Exposure: [M] mode, 30 s, f/18  
• White balance: Direct sunlight • Sensitivity: ISO 100 • Picture Control: Standard

## Silent photography for silent moments

- Capture tender moments with the Z 6II's silent photography utilising an electronic shutter that generates no mechanical sounds or "shake".



## Add drama to your images

- Play with multiple, versatile lighting options with the SB-5000 Speedlight which conducts radio communication from distances up to approx. 30 m/98 ft\*1 with minimum interference from obstacles or ambient lighting\*2.



- For convenient wireless shutter release, simply attach the new WR-R11b to the Z 6II.

\*1 Approx. range at height of about 1.2 m/3.9 ft; varies according to weather conditions, presence of obstacles and radio communication conditions.

\*2 Requires WR-R10 or WR-R11b Wireless Remote Controller.



# STAY ON TOP OF THINGS

## Dependable data backup

- Dual slots for CFexpress/XQD and UHS-II SD memory cards.
- Store the same data onto two cards for instant backup or record RAW and JPEG copies onto separate cards simultaneously.



## Sturdy and compact

- With magnesium alloy in the top, front and back covers, the Z 6II is designed to weather harsh conditions.
- Multiple impact and drop tests during development ensure high durability standards.
- Effective sealing in the joints of each exterior cover and essential components gives you high dust- and drip-resistant performance.



## Save or boost energy while shooting

- Shoot for longer with power-saving mode\*<sup>1</sup>.
- Get extra juice when shooting with USB power delivery\*<sup>2</sup> from a power bank\*<sup>3</sup> or computer via the optional USB Cable.

<sup>1</sup> This will lower the image quality and frame rate of live view.  
<sup>2</sup> USB power delivery using optional EH-7P Charging AC Adapter is also possible. When connected with the EH-7P and an EN-EL15c/15b is inserted in the body, only USB charging is possible.  
<sup>3</sup> Anker PowerCore+ 26800 PD 45W is the recommended portable charger. Use a USB cable with two Type-C connectors supplied with the portable charger.



Z 6II with Anker PowerCore+ 26800 PD 45W

## Comfortable vertical shooting with approx. 1.9× longer battery life

- For creators working on portrait or wedding hybrid shooters, the new, optional MB-N11 Power Battery Pack makes vertical shooting more comfortable.
- Plus, its dedicated shutter-release button, command dial, and ergonomically designed grip make vertical shooting a breeze.
- Get 1.9× more battery life when you use two EN-EL15c Rechargeable Li-ion Batteries instead of just the Z 6II body by itself.



# DO MORE AND EXPAND

## Smarter live view operation

- The large 8-cm/3.2-in. approx. 2100k-dot high-resolution tilting touch-screen monitor brings even more convenience to live view operation.
- When it tilts, the camera doesn't accidentally trigger the electronic viewfinder, preventing unintentional operation while holding the camera at waist position.



## A truly comfortable view

- Nikon's superior optical and image-processing technologies reduce aberration for a clear and comfortable view with minimum eyestrain — even during extended shoots.
- Incorporating an organic EL panel, the EVF features approx. 100% frame coverage and approx. 0.8× magnification\*, with approx. 37.0° diagonal viewing angle.



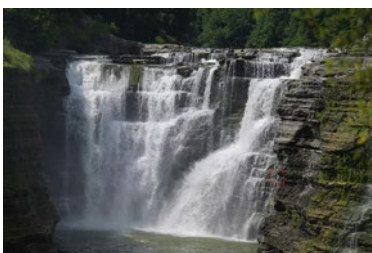
## Thorough edge-to-edge confirmation within the frame

- The Z 6II now lets you turn off the live view info display\*<sup>1</sup>.
- You can assign this function to custom controls\*<sup>2</sup>, and switch on/off with just a click.

<sup>1</sup> Focus point, rec icon during movie recording and total length display are excluded.  
<sup>2</sup> Assigned to the movie-record button in photo mode default setting.



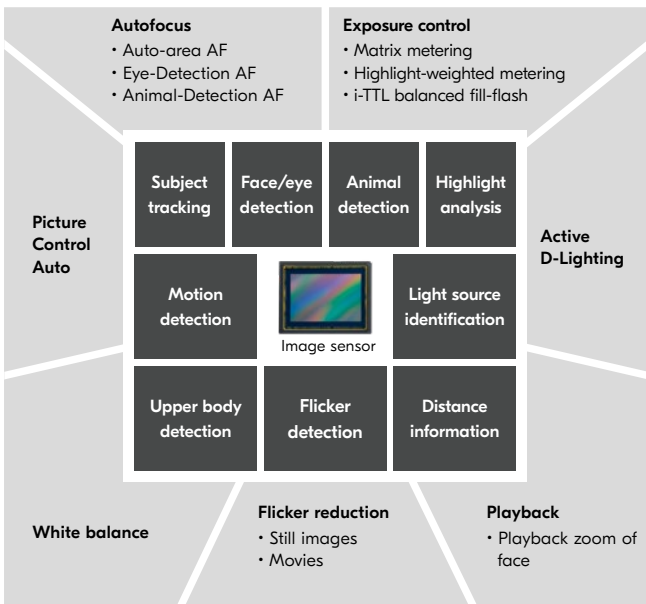
Live view info display: On



Live view info display: Off

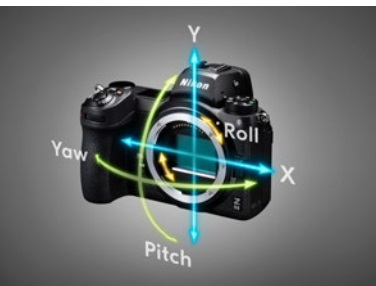
## Enhanced accuracy for optimum results

- The Advanced Scene Recognition System enhances accuracy in auto exposure, AF, auto white balance and other auto controls, so you don't have to.



## Powerful, 5-axis in-camera VR for diverse shooting scenarios

- In-camera vibration reduction (VR) detects camera shake before offering compensation in five directions: yaw, pitch, X, Y, and roll.
- Offers an effect equivalent to a shutter speed up to approx. 5.0 stops\*<sup>1</sup> faster.
- When recording handheld video without changing the composition, Normal VR can be combined with electronic VR\*<sup>2</sup> for even steadier shots.



<sup>1</sup> Based on CIPA Standards. This value is achieved when the NIKKOR Z 24-70mm f/4 S is attached, with zoom set at the maximum telephoto position. When VR lenses are attached, lenses' own VR effect is applied.

<sup>2</sup> Image quality decreases and the angle of view changes when using electronic VR. Not available in 120p, 100p and slow-motion movie modes, or during 4K UHD 10-bit HDMI output.

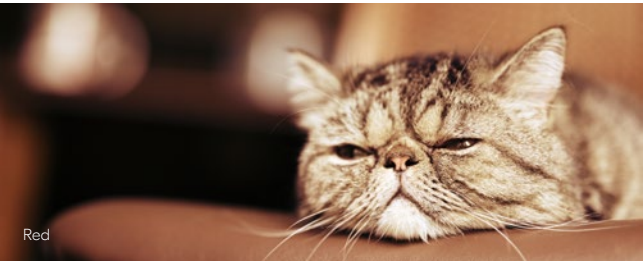
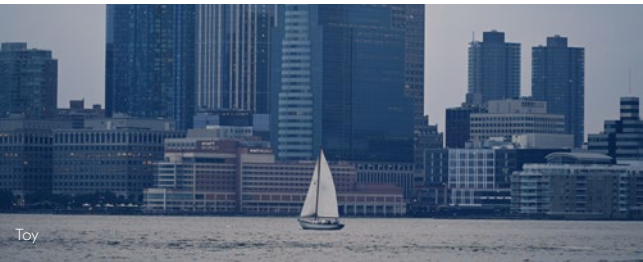


# EXPANDABLE CREATIVITY, EXTENSIVE CONNECTIVITY

## Picture Controls and Creative Picture Controls on the go

- Choose from 8 standard options or 20 Creative Picture Controls for a more stylised look.
- Available in all exposure modes as well as video recording.
- Easily fine tune your style with Quick sharp presets by tweaking the amount of sharpening, clarity and mid-range sharpening\* to your liking.

\* Adjustable in still shooting and high image quality mode for video recording.



## Easy firmware upgrade via smart devices

- SnapBridge ver. 2.7<sup>\*1</sup> informs you of new camera firmware and lets you receive it via smart devices to transfer it to your camera<sup>\*2</sup> right away via Wi-Fi®.
- There's no longer a need for a computer and a card reader for this process.
- Transfer RAW images and video files to your smart devices via SnapBridge.
- Various convenient remote control operations for shooting are also now available.



<sup>\*1</sup> Compatible with iPhone®, iPad®, iPod touch®, or smart devices running on the Android™, operating system. Available free from Apple App Store®, and Google Play™. Please check Nikon's website for further information.

<sup>\*2</sup> When transferring firmware to the Z 6II, the camera must be turned on with a memory card, and a battery with sufficient remaining life needs to be inserted. Once transferred, upgrade operation must be performed from the menu.



### Firmware update via SnapBridge



## Built-in Wi-Fi for effortless connectivity

- Transfer large images and videos<sup>\*1</sup> to a computer<sup>\*2</sup> at up to approx. 433 Mbps<sup>\*3</sup>.
- <sup>\*1</sup> Available in image transfer mode.
- <sup>\*2</sup> Wireless Transmitter Utility must be installed on the computer (available for download from Nikon website).
- <sup>\*3</sup> Maximum logical data rates according to IEEE standard. Actual rate may differ.

### PC connection via built-in Wi-Fi



# LARGEST MOUNT. ABUNDANT LIGHT. THE ULTIMATE IMAGING EXPERIENCE.

## Achieve strikingly a sharp, natural look with NIKKOR Z lenses

- Designed to make full use of the Z mount with its 55-mm diameter—the largest\* among full-frame mirrorless cameras
- Takes in a huge amount of light to deliver edge-to-edge sharpness, even at the maximum aperture.
- Get natural bokeh while point light sources are rendered just as your eye sees them.

\* As of October 14th, 2020. Based on Nikon research.

## The perfect companion for video shooting

- Quiet autofocus and aperture drive reduce operational noise.
- Focus (M/A), power aperture, exposure or ISO can be assigned to the control ring for smooth operation.
- Reverse rotation of the focus/control ring lets you manually focus using whichever rotation direction you are most comfortable with.
- All NIKKOR Z lenses are designed to produce coherent white tones together with the Z 6II, making it easy to match up the colours in post-production.

## NIKKOR Z 70-200mm f/2.8 VR S

- Be it portrait, wildlife or compressed city views—you can get outstanding clarity by keeping a constant bright maximum aperture of f/2.8.
- The multi-focusing system helps you achieve highly accurate, high-speed AF.



• Exposure: [M] mode, 1/6 s, f/2.8 • White balance: Color Temp. (3800K) • Sensitivity: ISO 800 • Picture Control: Standard

## NIKKOR Z f/1.8 prime lens series

- Capture sharp images stably across the entire frame, which far exceeds what's expected from lenses of this popular aperture.
- Tell sensational stories through landscapes and portraits with a wide variety of focal lengths ranging 20mm, 24mm, 35mm, 50mm and 85mm.
- Shoot low-light scenes beautifully with the bright f/1.8 maximum aperture.
- Thanks to the bright f/1.8 maximum aperture, each allows you to shoot low-light scenes beautifully, whether indoors or out, and create a cinematic look thanks to its large bokeh.



### NIKKOR Z 85mm f/1.8 S

• Exposure: [M] mode, 1/2500 s, f/2 • White balance: Direct sunlight  
• Sensitivity: ISO 100 • Picture Control: Portrait © Kento Mori



### NIKKOR Z 20mm f/1.8 S

• Exposure: [M] mode, 1/50 s, f/5 • White balance: Auto 1 • Sensitivity: ISO 100  
• Picture Control: Auto • Wireless flash options: Radio AWL © Kento Mori

## SPECIFICATIONS

Type of camera	Digital camera with support for interchangeable lenses
Lens mount	Nikon Z mount
Compatible lenses	• Z mount NIKKOR lenses • F mount NIKKOR lenses (mount adapter required; restrictions may apply)
Effective pixels	24.5 million
Image sensor	35.9 × 23.9 mm CMOS sensor (Nikon FX format)
Total pixels	25.28 million
File format	• NEF (RAW): 12 or 14 bit (lossless compressed, compressed, or uncompressed) • JPEG: JPEG-Baseline compliant with fine (approx. 1:4), normal (approx. 1:8), or basic (approx. 1:16) compression; size-priority and optimal-quality compression available • NEF (RAW)+JPEG: Single photograph recorded in both NEF (RAW) and JPEG formats
Picture Control System	Auto, Standard, Neutral, Vivid, Monochrome, Portrait, Landscape, Flat, 20 Creative Picture Controls; selected Picture Control can be modified; storage for custom Picture Controls
Storage media	CFexpress (Type B), XQD, SD (Secure Digital), and UHS-II compliant SDHC and SDXC memory cards
Dual card slots	Either card can be used for primary or backup storage or for separate storage of NEF (RAW) and JPEG images; pictures can be copied between cards.
Viewfinder	1.27-cm/0.5-in. approx. 3690k-dot (Quad VGA) OLED electronic viewfinder with color balance and auto and 11-level manual brightness controls
Viewfinder frame coverage	Approx. 100% horizontal and 100% vertical
Viewfinder magnification	Approx. 0.8× (50 mm lens at infinity, -1.0 m <sup>-1</sup> )
Monitor	8-cm/3.2-in., approx. 2100k-dot tilting TFT touch-sensitive LCD with 170° viewing angle, approx. 100% frame coverage, and color balance and 11-level manual brightness controls
Shutter type	Electronically-controlled vertical-travel focal-plane mechanical shutter; electronic front-curtain shutter; electronic shutter
Shutter speed	1/8000 to 30 s in steps of 1/3 and 1/2 EV, extendable to 900 s in mode <b>M</b> , bulb, time, X200
Release modes	Single frame, continuous L, continuous H, continuous H (extended), self-timer
Approximate frame advance rate (measured by in-house tests)	• Continuous L: Approx. 1 to 5 fps • Continuous H: Approx. 5.5 fps • Continuous H (extended): Approx. 14 fps (14-bit NEF/RAW: Approx. 10 fps)
Exposure metering system	TTL metering using camera image sensor
Exposure metering modes	• Matrix metering • Center-weighted metering: Weight of 75% given to 12 mm circle in center of frame; weighting can instead be based on average of entire frame • Spot metering: Meters 4 mm circle (about 1.5% of frame) centered on selected focus point • Highlight-weighted metering
Metering range (ISO 100, f/2.0, 20°C/68°F)	-4 to +17 EV
ISO sensitivity (Recommended Exposure Index)	ISO 100 to 51200 in steps of 1/3 or 1/2 EV; can also be set to approx. 0.3, 0.5, 0.7 or 1 EV (ISO 50 equivalent) below ISO 100 or to approx. 0.3, 0.5, 0.7, 1 or 2 EV (ISO 204800 equivalent) above ISO 51200; auto ISO sensitivity control available
Active D-Lighting	Can be selected from auto, extra high, high, normal, low or off (available in both photo and movie modes)
Autofocus	Hybrid phase-detection/contrast AF with AF assist
AF detection range (in photo mode, AF-S, ISO 100, f/2.0, 20°C/68°F)	-4.5 to +19 EV (-6 to +19 EV with low-light AF)
Focus points (in photo mode, FX format, single-point AF)	273 points
AF-area modes	Pinpoint AF, single-point and dynamic-area AF (pinpoint and dynamic-area AF available in photo mode only); wide-area AF (S); wide-area AF (L); wide-area AF (L-people); wide-area AF (L-animals); auto-area AF; auto-area AF (people); auto-area AF (animals)
Camera on-board VR	5-axis image sensor shift
Lens on-board VR	Lens shift (available with VR lenses)
Flash control	TTL: i-TTL flash control; i-TTL balanced fill-flash is used with matrix, center-weighted, and highlight-weighted metering, standard i-TTL fill-flash with spot metering
Flash modes	Front-curtain sync, slow sync, rear-curtain sync, red-eye reduction, red-eye reduction with slow sync, off

Nikon Creative Lighting System (CLS)	i-TTL flash control, radio-controlled Advanced Wireless Lighting, optical Advanced Wireless Lighting, modeling illumination, FV lock, color information communication, auto FP high-speed sync, unified flash control
White balance	Auto (3 types), natural light auto, direct sunlight, cloudy, shade, incandescent, fluorescent (7 types), flash, choose color temperature (2500 K to 10000 K), preset manual (up to 6 values can be stored), all with fine-tuning except choose color temperature
Bracketing types	Exposure, flash, white balance and ADL
Movie metering modes	Matrix, center-weighted or highlight-weighted
Frame size (pixels) and frame rate	• 3840 × 2160 (4K UHD); 30p (progressive), 25p, 24p • 1920 × 1080; 120p, 100p, 60p, 50p, 30p, 25p, 24p • 1920 × 1080 (slow-mo); 30p ×4, 25p ×4, 24p ×5 Actual frame rates for 120p, 100p, 60p, 50p, 30p, 25p, and 24p are 119.88, 100, 59.94, 50, 29.97, 25, and 23.976 fps respectively
File format	MOV, MP4
Video compression	H.264/MPEG-4 Advanced Video Coding
Audio recording format	Linear PCM, AAC
Audio recording device	Built-in stereo or external microphone with attenuator option; sensitivity adjustable
Movie ISO sensitivity (Recommended Exposure Index)	• <b>M</b> : Manual selection (ISO 100 to 51200 in steps of 1/3 or 1/2 EV); with additional options available equivalent to approx. 0.3, 0.5, 0.7, 1, or 2 EV (ISO 204800 equivalent) above ISO 51200; auto ISO sensitivity control (ISO 100 to Hi 2.0) available with selectable upper limit • <b>P, S, A</b> : Auto ISO sensitivity control (ISO 100 to Hi 2.0) with selectable upper limit • <b>i</b> : Auto ISO sensitivity control (ISO 100 to 51200)
Other movie options	Time-lapse movie recording, electronic vibration reduction, time codes, logarithmic (N-Log) and HDR (HLG) movie output
USB	Type C USB connector (SuperSpeed USB); connection to built-in USB port is recommended
HDMI output	Type C HDMI connector
Accessory terminal	Built-in (can be used with MC-DC2 Remote Cords and other optional accessories)
Audio input	Stereo mini-pin jack (3.5-mm diameter; plug-in power supported)
Audio output	Stereo mini-pin jack (3.5-mm diameter)
Wi-Fi	Available
Bluetooth	Available
Battery	One EN-EL15c Rechargeable Li-ion Battery; EN-EL15b/EN-EL15a/EN-EL15 can also be used, but note that fewer pictures can be taken on a single charge and that the EH-7P charging AC adapter can be used to charge EN-EL15c/EN-EL15b batteries only
Battery pack	MB-N11 Power Battery Pack and MB-N10 Battery Pack (available separately); each takes two EN-EL15c batteries; EN-EL15b/EN-EL15a/EN-EL15 batteries can be used in place of the EN-EL15c. The number of pictures that can be taken on a single charge (i.e., battery endurance) will however drop compared to the EN-EL15c
Charging AC adapter	EH-7P charging AC adapter (available separately)
AC adapter	EH-5d/EH-5c/EH-5b AC adapter (requires EP-5B power connector, which is available separately)
Other features	Multiple exposure, silent photography, interval timer shooting, focus shift shooting, HDR, SnapBridge compatibility and High-Speed Frame Capture, retouch menu
Dimensions (W × H × D)	Approx. 134 × 100.5 × 69.5 mm/5.3 × 4.0 × 2.8 in.
Weight	Approx. 705 g/1 lb 8.9 oz with battery and memory card but without body cap; approx. 615 g/1 lb 5.7 oz (camera body only)
Operating environment	Temperature: 0 to 40°C/32 to 104°F; humidity: 85% or less (no condensation)
Supplied accessories (may differ by country or area)	EN-EL15c Rechargeable Li-ion Battery, MH-25a Battery Charger, DK-29 Rubber Eyecup, UC-E24 USB Cable, HDMI/USB Cable Clip, AN-DC19 Strap, BF-N1 Body Cap, BS-1 Accessory Shoe Cover

• XQD is a trademark of Sony Corporation. • CFexpress is a trademark of the CFA. • The SD, SDHC and SDXC logos are trademarks of the SD-3C, LLC. • HDMI, the HDMI logo and High-Definition Multimedia Interface are trademarks or registered trademarks of HDMI Licensing LLC. • Wi-Fi® and the Wi-Fi logo are trademarks or registered trademarks of the Wi-Fi Alliance®. • The Bluetooth® word mark and logos are registered trademarks owned by Bluetooth SIG, Inc. and any use of such marks by Nikon is under license. • Other products and brand names are trademarks or registered trademarks of their respective companies. • Images in viewfinders, on LCDs and monitors shown in this material are simulated.



Specifications and equipment are subject to change without any notice or obligation on the part of the manufacturer. November 2020 © 2020 Nikon Corporation



**WARNING**

**TO ENSURE CORRECT USAGE, READ MANUALS CAREFULLY BEFORE USING YOUR EQUIPMENT.  
SOME DOCUMENTS CAN BE DOWNLOADED FROM [downloadcenter.nikonimglib.com](https://downloadcenter.nikonimglib.com).**



Nikon Singapore Pte. Ltd. 60 Anson Road, Unit #09-01 Mapletree Anson, Singapore 079914 [www.nikon.com.sg](http://www.nikon.com.sg)  
Nikon Hong Kong Ltd. Suite 1001, 10/F, Cityplaza One, 1111 King's Road, Taikoo Shing, Hong Kong [www.nikon.com.hk](http://www.nikon.com.hk)  
Nikon Australia Pty Ltd. Suite 501, Level 5, 5 Rider Boulevard, Rhodes, NSW 2138, Australia [www.nikon.com.au](http://www.nikon.com.au)  
Nikon India Private Limited Plot No. 71, Sector 32, Institutional Area, Gurgaon 122001, Haryana, India (CIN-749999HR2007FTC036820) [www.nikon.co.in](http://www.nikon.co.in)  
Nikon Sales (Thailand) Co., Ltd. 1 Empire Tower, 45th Floor, River Wing East, South Sathorn Rd, Yannawa, Sathorn, Bangkok 10120, Thailand [www.nikon.co.th](http://www.nikon.co.th)  
Nikon Middle East FZE Level 14, Jafza Views 19, P.O. Box 261908, Dubai, UAE [www.nikon-me.com](http://www.nikon-me.com)  
NIKON CORPORATION Shinagawa Intercity Tower C, 2-15-3, Konan, Minato-ku, Tokyo 108-6290, Japan [www.nikon.com](http://www.nikon.com)

f @nikonasia @nikonasia



Nikon Z 6II product page

En