

110
million
NIKKOR

My NIKKOR

www.mynikkor.com



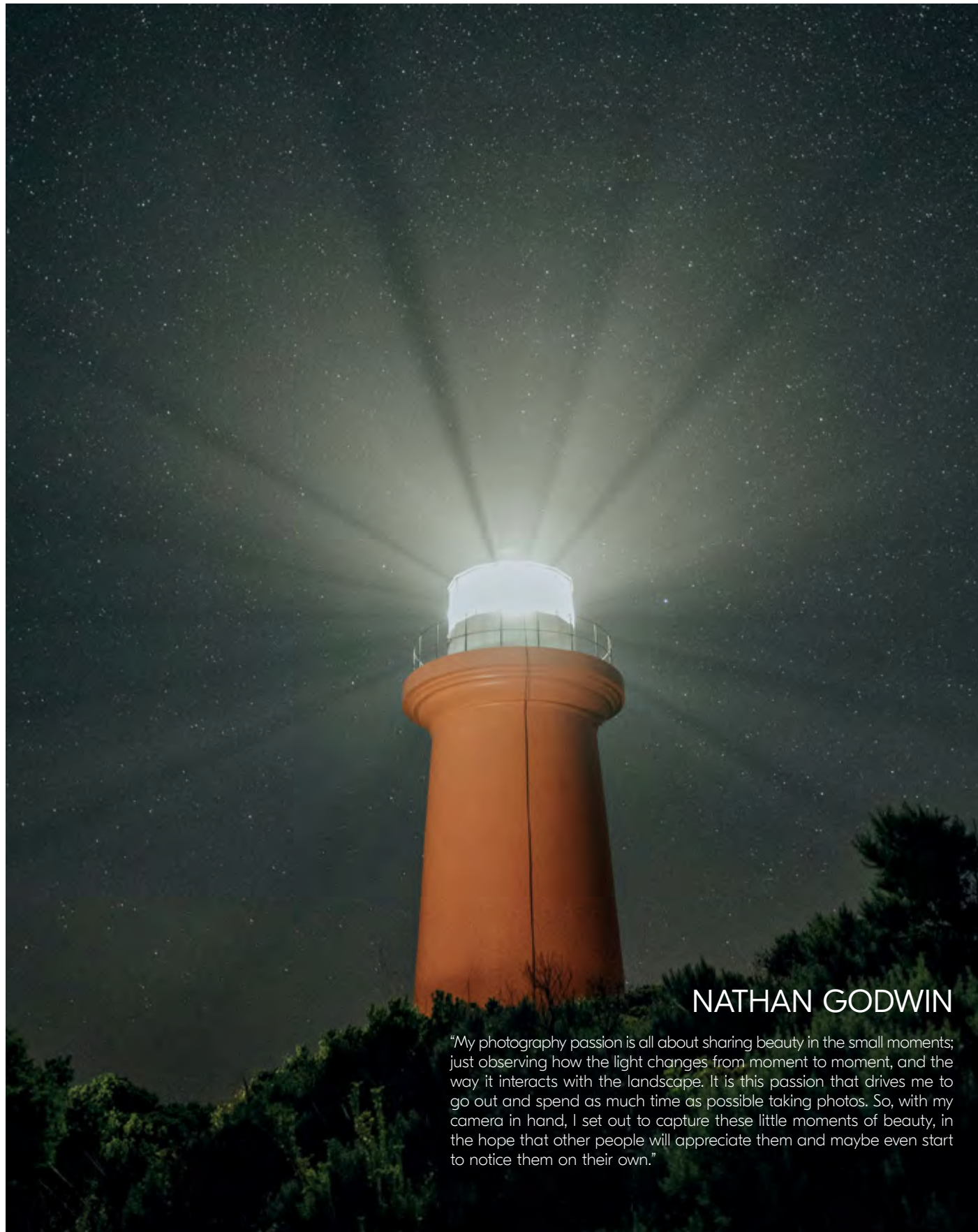


UNLIMITED IMAGING POSSIBILITIES

Lenses are windows to a stunning visual story.

Backed by top-tier craftsmanship of more than 60 years of NIKKOR F lens legacy, the NIKKOR Z lens range presents you with outstanding image quality and reliability that suits your favorite shooting style. Capture an exquisite shot or film a vivid moving moment, tell your unique story with the ever-expanding NIKKOR Z lineup.

FOR THE WIDEST HORIZONS



NATHAN GODWIN

"My photography passion is all about sharing beauty in the small moments; just observing how the light changes from moment to moment, and the way it interacts with the landscape. It is this passion that drives me to go out and spend as much time as possible taking photos. So, with my camera in hand, I set out to capture these little moments of beauty, in the hope that other people will appreciate them and maybe even start to notice them on their own."



STM	N	SIC	IF	Multi- F.S.
M/A	ED	AS	E	

Lens construction: 14 elements in 11 groups
Minimum focus distance: 0.2 m/0.66 ft
Maximum reproduction ratio: 0.19x
Filter-attachment size: 77 mm
Accessories: Hood HB-95 / Case CL-C1

NIKKOR Z 20mm f/1.8 S **S-Line**

Experience true joy with our ultra-wide-angle lens that delivers unparalleled rendering performance every time.

"I love that the lens is quite fast and has a f/1.8 aperture, which means I don't need to increase the ISO to be able to capture stars and still achieve a cleaner image overall. With the water images, whilst the lens is fast, it still allows me to capture rather intimate expressions of the ocean's textures. This lens is also my go-to for astrophotography images; I love to capture vast skies with some foreground elements. With its 20mm focal length, I'm able to capture both in one image. This lens has allowed me to explore light in ways that I previously could not."



BEATRICE CONTRINI

"I am a happy wife, a proud mother, and a passionate photographer. I grew up in Italy and have always had a strong desire to get to know new people and places, which has fuelled my adventures of travelling the world and living in different countries for the past 20 years. My love for photography launched my career in 2009. Since then, I have had the privilege to photograph over a hundred weddings and countless beautiful women and families. I'm passionate about creating timeless photographs that reflect the human connection. I love what I do and that includes the opportunity to meet new people with great stories, which makes it easy to have a relaxed, fun, and professional approach to my photography. My style is natural, elegant, and creative — but above all, I ensure my clients have a stunning portfolio of high-quality images to take home and remind them of their special moments. In my work, I look out for everyone's beauty and their unique attributes, and photography enables me to do that in the best way possible."



FOR THE SPECIAL MOMENT



STM	N	SIC	RF	Mini FS
M/A	ED	AS	E	

Lens construction: 12 elements in 10 groups
Minimum focus distance: 0.25 m/0.82 ft
Maximum reproduction ratio: 0.15x
Filter-attachment size: 72 mm
Accessories: Hood HB-88 / Case CL-C1

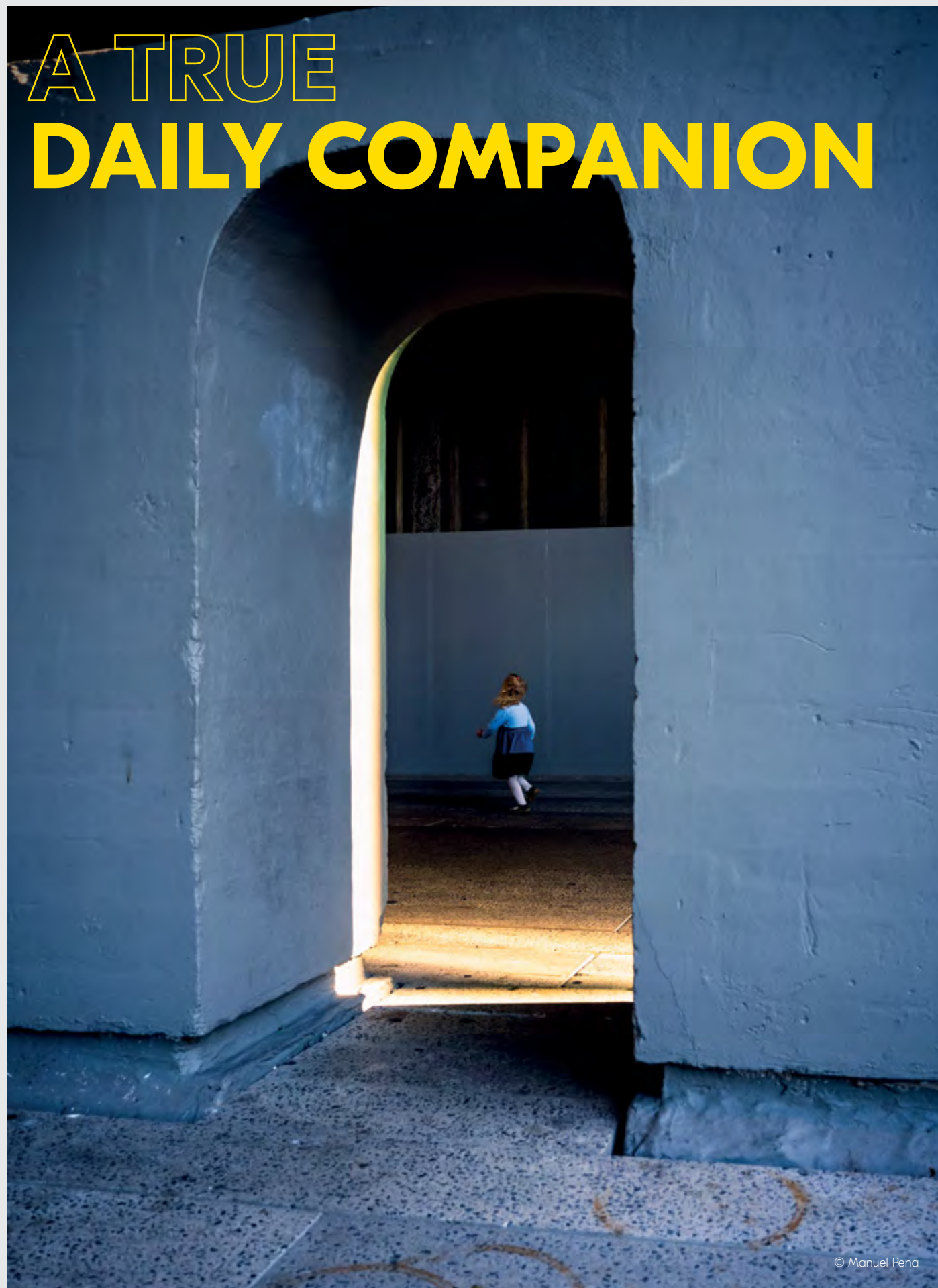
NIKKOR Z 24mm f/1.8 S

S-Line

From a stunning scenario to intimate portraits, the wide-angle prime lens captures the beauty of the moment.

"As a wedding photographer, I like working with two camera bodies and two different lenses so I can be quick and capture scenes from different points of view. The new Z series is such a light and elegant solution that allows me to do that even for full-day shoots, while achieving professional sharp images. With the NIKKOR Z 24mm f/1.8 S lens' wide angle and great depth of field, I love being able to focus on my subject without having to crop out the environment they were in."

A TRUE DAILY COMPANION



© Manuel Pena



© Ben Moore

STM SIC All F M/A AS E

Lens construction: 8 elements in 6 groups
Minimum focus distance: 0.2 m/0.66 ft
Maximum reproduction ratio: 0.19×
Filter-attachment size: 52 mm
Accessories: Hood HB-III / Case CL-C4 (Optional)



NIKKOR Z 26mm f/2.8

The slimmest¹, lightest² wide-angle lens of the current NIKKOR Z lineup.

A mirrorless pancake lens with a versatile focal length that weighs only 125g. Slip it in your bag for everyday snapshots, cityscapes, architecture, or any Insta-worthy moment, without adding extra burden.

¹ Among full-frame/FX-format AF lenses for mirrorless cameras, available as of March, 2023.
Statement based on Nikon research.

² Among NIKKOR Z lenses available as of March, 2023.

FOR THE EVERYDAY

NIKKOR Z 28mm f/2.8

Capture everyday snapshots handily with the portable wide-angle prime lens

Experience easy shooting all day! Add this light and compact lens to your collection, allowing you to capture snapshots and film moving stories for long hours without fatigue.

© Malin Mörner



STM SIC IF Metal FS M/A AS E

Lens construction: 9 elements in 8 groups
Minimum focus distance: 0.19 m/0.63 ft
Maximum reproduction ratio: 0.2×
Filter-attachment size: 52 mm
Accessories: Case CL-C4 (optional)

NIKKOR Z 28mm f/2.8 (SE)

Your everyday snapshots but with a classic style infused

This Special Edition (SE) lens features a heritage design from classic NIKKOR lenses that matches the Z fc body.

Packed in a compact body, a wide angle of view as well as a short minimum focus distance, this lens is ideal for anyone who enjoys going around for a long day of street-style shooting.

© Yansu Kim



STM SIC IF Metal FS M/A AS E

Lens construction: 9 elements in 8 groups
Minimum focus distance: 0.19 m/0.63 ft
Maximum reproduction ratio: 0.2×
Filter-attachment size: 52 mm
Accessories: Case CL-C4 (optional)

FOR
A WIDE STORY

ONVISA THEWPHAINGARM

"I have always loved the saying 'a picture is worth a thousand words', and I believe that a photo can tell so much. Behind each photo is a beautiful and complete story, and that is the message I wish to convey within each frame. My passion is to capture shots that express emotions at their fullest — just like songs that express sorrow, joy, or sadness."



NIKKOR Z 35mm f/1.8 S **S-Line**

Superior resolution. Incredible speed.
Share your moments and stories in a wider perspective.

"Storytelling is the most important part of my photos, and the NIKKOR Z 35mm f/1.8 S has been a reliable medium for me to do so. Whether it is the in-game action or behind the scenes, the NIKKOR Z 35mm f/1.8 S lens is the answer to all my needs. I can use this lens to capture varying moments, from the crowd in the stands, to close-up shots of the athletes and intricate details like tattoos and logos. The lens is quick and powerful, and it does not disrupt the moment as it happens."

STM	N	SIC	RF	Multi
M/A	ED	AS	E	FS

Lens construction: 11 elements in 9 groups
Minimum focus distance: 0.25 m/0.82 ft
Maximum reproduction ratio: 0.19x
Filter-attachment size: 62 mm
Accessories: Hood HB-89 / Case CL-C1

FOR THE LITTLE THINGS



NIKKOR Z 40mm f/2

Ultra-compact in size, big on versatility and bokeh expression

This ultra-compact prime lens is the perfect pal of any of your Z cameras, the focal length allows for versatile shooting of anything as wide as a landscape or tight to a portrait. The fast f/2 maximum aperture creates beautiful bokeh effect and capture fast action of your subject. Film your moments with the quiet autofocus system without stray noise.

STM SIC IF M/A AS E

Lens construction: 6 elements in 4 groups
Minimum focus distance: 0.29 m/0.96 ft
Maximum reproduction ratio: 0.17×
Filter-attachment size: 52 mm
Accessories: Case CL-C4 (optional)

© Gabriela Herman



NIKKOR Z 40mm f/2 (SE)

Ultra-compact lens redesigned with an iconic look

This Special Edition (SE) lens is redesigned to suit the heritage style of the Z fc body. Compact and lightweight at only 170g, this lens is your perfect street snap buddy.

STM SIC IF M/A AS E

Lens construction: 6 elements in 4 groups
Minimum focus distance: 0.29 m/0.96 ft
Maximum reproduction ratio: 0.17×
Filter-attachment size: 52 mm
Accessories: Case CL-C4 (optional)

© Nao

FOR THE CUTTING EDGE



CHAN KIT

"I enjoy creating imagery that features a harmonious blend of fashion and photography. Photography helps to stimulate my creativity and allows me to bring my imagination to life with every shot. Being very spontaneous, I love to explore the world with my camera, so that wherever I go, I am able to capture the glorious moments and fulfil my enthusiasm and passion for photography."



NIKKOR Z 50mm f/1.2 S **S-Line**

Sharp & exquisite image rendering quality in the fastest 50mm prime NIKKOR Z lens there is.

"The large aperture of the NIKKOR Z 50mm f/1.2 S lens allows me to achieve excellent results under extreme situations. Coupled with the focusing speed of the Z 7II, I can easily capture images in various scenarios and lighting environments. I enjoy shooting portraits the most because the lens helps me capture expressions, even down to the most delicate of details, and achieve beautiful bokeh. This lens allows me to focus and capture excellent images at very close distances, and even under low-light situations."

STM	N	ARNEO	SIC	IF
FS	M/A	ED	AS	E

Lens construction: 17 elements in 15 groups
Minimum focus distance: 0.45 m/1.48 ft
Maximum reproduction ratio: 0.15x
Filter-attachment size: 82 mm
Accessories: Hood HB-94 / Case CL-C2

A TRUE STYLE

FOROUGH YAVARI

"I am a fine art portrait and fashion photographer, and my work focuses on portraying the narratives of women around the world. When we talk about emotions and expressions in portraits, we refer to that split second when a person trusts you and gives an honest expression showing her emotions or feelings. It is important to be ready with your camera equipment; to capture that artistic portraiture shot."



NIKKOR Z 50mm f/1.8 S

S-Line

The iconic 50mm prime lens that always delivers a legendary performance, no matter the situation.

"The NIKKOR Z 50mm f/1.8 S is my all-time favourite lens for taking portraits of women. It is amazingly sharp, fast, and provides a beautiful depth of field, with natural bokeh and minimal distortion — perfect for portrait photography. As most of the images focus on women's stories and life experiences, I need to capture natural expressions and draw those stories out through the lens. The bokeh rendition is absolutely beautiful especially when using the widest aperture available — you cannot go wrong with this lens!"

STM	N	SIC	IF
M/A	ED	AS	E

Lens construction: 12 elements in 9 groups
 Minimum focus distance: 0.4 m/1.32 ft
 Maximum reproduction ratio: 0.15×
 Filter-attachment size: 62 mm
 Accessories: Hood HB-90 / Case CL-C1

FOR TRUE PERFECTION



NIKKOR Z 58mm f/0.95 S Noct

S-Line

The largest aperture of any NIKKOR lens ever made. Prepare for perfect control, bokeh and amazing depth of field.

The NIKKOR Z 58mm f/0.95 S Noct is a one-of-a-kind manual focus lens with the largest maximum aperture of any NIKKOR ever: f/0.95. Made possible by innovations of the new Z mount, it delivers thrilling new capabilities, for the Z mirrorless system — vast depth-of-field control and elaborate bokeh for portraiture, superb point-image reproduction and low-light performance for night landscapes and astrophotography — all in an immaculately constructed manual lens with precision feel and brilliant operability.

N ARNEO SIC ED AS FLUORINE COAT E

Lens construction: 17 elements in 10 groups
Minimum focus distance: 0.5 m/1.64 ft
Maximum reproduction ratio: 0.19×
Filter-attachment size: 82 mm
Accessories: Hood HB-38 / Trunk Case CL-101



FOR THE
IMPECCABLE DETAILS



NIKKOR Z 85mm f/1.2 S **S-Line**

A rare fast portrait lens with large aperture at f/1.2 that renders intricate attributes in unparalleled resolution with gorgeous bokeh.

Let your subject stand out against a natural bokeh background. Take a portrait and revel in the output that renders perfectly fine hair, skin texture, individual eyelashes in detail. One that allows you to expand your range of expression in portraiture, wedding, and fashion, in both stills and videos.

STM	N	SIC	IF	Mini FS
M/A	ED	AS	E	

Lens construction: 15 elements in 10 groups
 Minimum focus distance: 0.85 m/2.79 ft
 Maximum reproduction ratio: 0.11x
 Filter-attachment size: 82 mm
 Accessories: Hood HB-106 / Case CL-C2



CALVIN BONG

"As someone who works at sea, my love for photography began in 2014 when I casually snapped photos of the sea, sunrise and sunsets and shared them on social media, where I have met many like-minded friends and have also gone on photo walks with them. Then a fellow photographer challenged me to capture a subject which I thought was most difficult — portraits. This led me to explore techniques on shooting portraiture, practised my skills on a few close friends, and since then I have kept going. Why portraits? Because a portrait showcases a person at a particular moment in time, which could never be reanimated, and that is a precious memory."

FOR THE HUMAN TOUCH



NIKKOR Z 85mm f/1.8 S

S-Line

From up-close portraiture to street snaps, or tight video scenes, capture people subjects brilliantly with this medium-telephoto prime lens.

"I love how portable the NIKKOR Z 85mm f/1.8 S lens is. Thanks to its lightweight quality, I'm able to bring the lens anywhere I go — whether it's for a casual shoot or on travels. The lens renders beautiful bokeh that helps to enhance my portraiture shots, making it a good tool to capture portraits."

The fast and sharp focus of the lens, even at the widest aperture, is ideal for capturing movements within a frame. Sometimes I also shoot portraits where there is movement, for example dancers, so this lens comes in handy. With this lens, I am able to share my unique perspective of creating dreamy portraits with its wide aperture."

STM	N	SIC	IF
FS	M/A	ED	E

Lens construction: 12 elements in 8 groups
Minimum focus distance: 0.8 m/2.62 ft
Maximum reproduction ratio: 0.12×
Filter-attachment size: 67 mm
Accessories: Hood HB-91 / Case CL-C1

FOR THE TRUE DISTANTED



NIKKOR Z 400mm f/2.8 TC VR S **S-Line**

Capture anything from afar with cutting-edge technology and the exquisite performance of this fast super-telephoto lens.

Extend your reach flexibly with just one lens. This lens not only provides exceptional rendering performance with high resolution and beautiful bokeh, but also, its built-in 1.4× teleconverter increases the focal length to 560 mm with a simple operation. Advanced technologies adopted in this lens include Meso Amorphous Coat that boasts the highest anti-reflection performance in NIKKOR history, and Silky Swift VCM that realises higher-speed, higher-accuracy and quieter AF operation for comfortable telephoto shooting.

© Role Gallitz

VR SSVCM M ARNEO SIC IF M/A
FL SR SUPER ED ED FLUORINE COAT E

Lens construction: 25 elements in 19 groups*
Minimum focus distance: 2.5 m/8.21 ft
Maximum reproduction ratio: 0.17×
Filter-attachment size: 46 mm
Accessories: Hood HK-42 / Case CL-C3

* Including 7 elements in 4 groups in the built-in teleconverter.



FOR THE TRUE ACTION

VR STM N SIC IF E
M/A SR SUPER ED ED FLUORINE COAT

Lens construction: 19 elements in 13 groups
Minimum focus distance: 2.5 m/8.21 ft
Maximum reproduction ratio: 0.16×
Filter-attachment size: 95 mm
Accessories: Hood HB-105/ Case CL-C5



NIKKOR Z 400mm f/4.5 VR S **S-Line**

Reach for distanced actions with this telephoto lens that renders sharp and exceptional images.

Take in the distance with this compact and agile super-telephoto prime lens. The NIKKOR Z 400mm f/4.5 VR S provides the reach that you need, and yet is nimble enough for handheld shooting. Acquire clear and crisp images with its powerful Vibration Reduction (VR) and superior S-Line optical performance as you photograph the action in full speed from afar.



VR SSVCM M N SIC IF M/A
FL SR ^{SUPER}ED ED FLUORINE COAT E

Lens construction: 26 elements in 20 groups*
Minimum focus distance: 4.3m/14.11 ft
Maximum reproduction ratio: 0.14×¹/0.2×²
Filter-attachment size: 46 mm
Accessories: Hood HK-43/ Case CL-L3

* Including 7 elements in 4 groups in the built-in teleconverter.
¹ Without built-in teleconverter.
² With built-in teleconverter.

© Quinn Rooney

FOR THE

TRUE ENTHUSIASTS



© Quinn Rooney



NIKKOR Z 600mm f/4 TC VR S S-Line

Shoot further with just one flick of the switch. This telephoto lens with in-built teleconverter is perfect for capturing of the decisive moment from afar.

Experience the unparalleled versatility and comfort when you capture distance subjects such as wildlife, sports and airplanes with the NIKKOR Z 600mm f/4 TC VR S. With a 1.4× in-built teleconverter, this compact, lightweight super-telephoto lens allows users to conveniently change between two focal lengths of 600mm and 840mm at a flick of a switch.



VR STM N SIC IF M/A
PF SR ED ^{FLUORINE}COAT E

Lens construction: 22 elements in 14 groups
Minimum focus distance: 5 m/16.41 ft
Maximum reproduction ratio: 0.16×
Filter-attachment size: 46 mm
Accessories: Hood HB-104 / Case CL-L3

© Alex Schwarz

FOR THE

FAR, FAR AWAY



© Alex Schwarz



NIKKOR Z 800mm f/6.3 VR S S-Line

Capture distant objects with the longest focal length lens in the NIKKOR Z range.

The NIKKOR Z 800mm f/6.3 VR S, a super-telephoto prime lens that offers the longest focal length in the current NIKKOR Z lineup*. With the powerful Vibration Reduction (VR), this lens allows you to capture wildlife, airplanes, race cars, or other subjects from a distance with outstanding image resolution.

*As of December 2022

FOR THE WHOLE ULTRA-WIDE WORLD

MARISSA KNIGHT

"As a landscape photographer, I'm all about capturing magical light in my images. This fascination with light is what makes me feel alive and drives me to hone my craft every time I pick up my camera."

STM N ARNEO SIC IF
M/A ED AS FLUORINE E

Lens construction: 16 elements in 11 groups
Minimum focus distance: 0.28 m/0.92 ft
Maximum reproduction ratio: 0.13x
Filter-attachment size: 112 mm
Accessories: Hood HB-96, HB-97 / Case CL-C2



NIKKOR Z 14-24mm f/2.8 S **S-Line**

Ultra-wide perspective meets outstanding performance. Perfect for landscapes, cityscapes and beautiful night sky imagery.

"The NIKKOR Z 14-24mm f/2.8 S lens allows me to capture more in frame and get sharp details from edge to edge. I love how I'm able to shoot as wide as 14mm or zoom in to 24mm, and still achieve amazing crisp details. Its versatility lets me capture various landscapes, from beautiful beaches to scenic mountains, and everything in between. I also love its lightweight design and how easy it is to use."

FOR ANYWHERE YOU GO

ALEXANDER RAMAT

"Photography is my passion. Through photography, I feel closer to nature and I endeavour to showcase Earth's beauty. I hope that I can capture my audience's attention with my images and communicate the importance of saving and protecting the amazing creations of nature for future generations"

STM N SIC IF M/A
ED AS AS FLUORINE COAT E

Lens construction: 14 elements in 12 groups
Minimum focus distance: 0.28 m/0.92 ft
Maximum reproduction ratio: 0.16×
Filter-attachment size: 82 mm
Accessories: Hood HB-86 / Case CL-CI



NIKKOR Z 14-30mm f/4 S **S-Line**

The compact ultra-wide zoom lens for capturing scenic visual stories anywhere you go.

"The NIKKOR Z 14-30mm f/4 S is a lightweight lens, and together with the Nikon Z 7, it makes for the perfect companion. The 14-30mm focal length is an ideal range and I find it to be versatile for the types of photography genres I shoot — landscape, cityscape, and astrophotography. I am impressed at how this lens handles flare dots and produces beautiful crisp sunstars, which is impressively high in standard for sharpness and image quality. I am also able to zoom out to 14mm without a vignette effect when using a filter."



NIKKOR Z 17-28mm f/2.8

The compact, lightweight ultra-wide zoom lens perfect for a day out.

Capture remarkable scenes with the NIKKOR Z 17-28mm f/2.8, a light and compact ultra-wide zoom lens for your everyday expeditions. From travel, cityscape, daily snaps or videos to night sceneries, this lens lets you acquire immersive perspectives that are uniquely yours.

STM SIC IF M/A
SUPER ED ED AS E

Lens construction: 13 elements in 11 groups
Minimum focus distance: 0.19 m from focal plane
Maximum reproduction ratio: 0.19×
Filter-attachment size: 67 mm
Accessories: Hood HB-107/ Case CL-C1

FOR THE UNCOMPROMISING



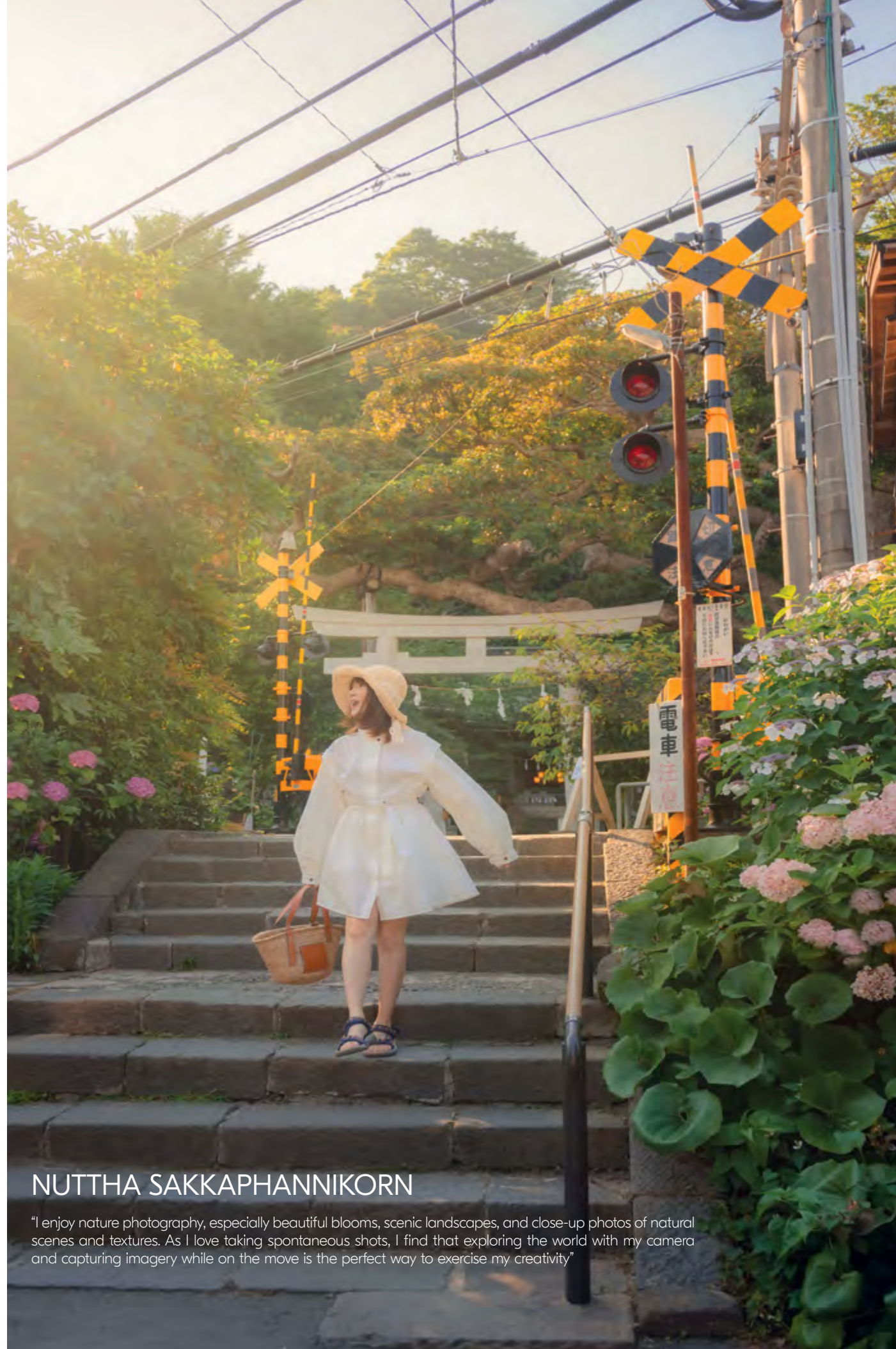
NIKKOR Z 24-120mm f/4 S S-Line

Capture a wide variety of subjects with just one lens, the one that offers you perfect 5x standard zoom.

This all-in-one 5x standard zoom lens covers for a substantial zoom range that provides you the versatility in capturing a brand range of subjects and sceneries without needing to switch lenses. With superior S-Line performance, tell your stories with outstanding imagery.

STM N ARNEO IF W-FC M/A
ASED ED AS FLUORINE COAT E

Lens construction: 16 elements in 13 groups
Minimum focus distance: 0.35 m/1.15 ft
Maximum reproduction ratio: 0.39×
Filter-attachment size: 77 mm
Accessories: Hood HB-102 / Case CL-C2



NUTTHA SAKKAPHANNIKORN

"I enjoy nature photography, especially beautiful blooms, scenic landscapes, and close-up photos of natural scenes and textures. As I love taking spontaneous shots, I find that exploring the world with my camera and capturing imagery while on the move is the perfect way to exercise my creativity"



NIKKOR Z 24-50mm f/4-6.3

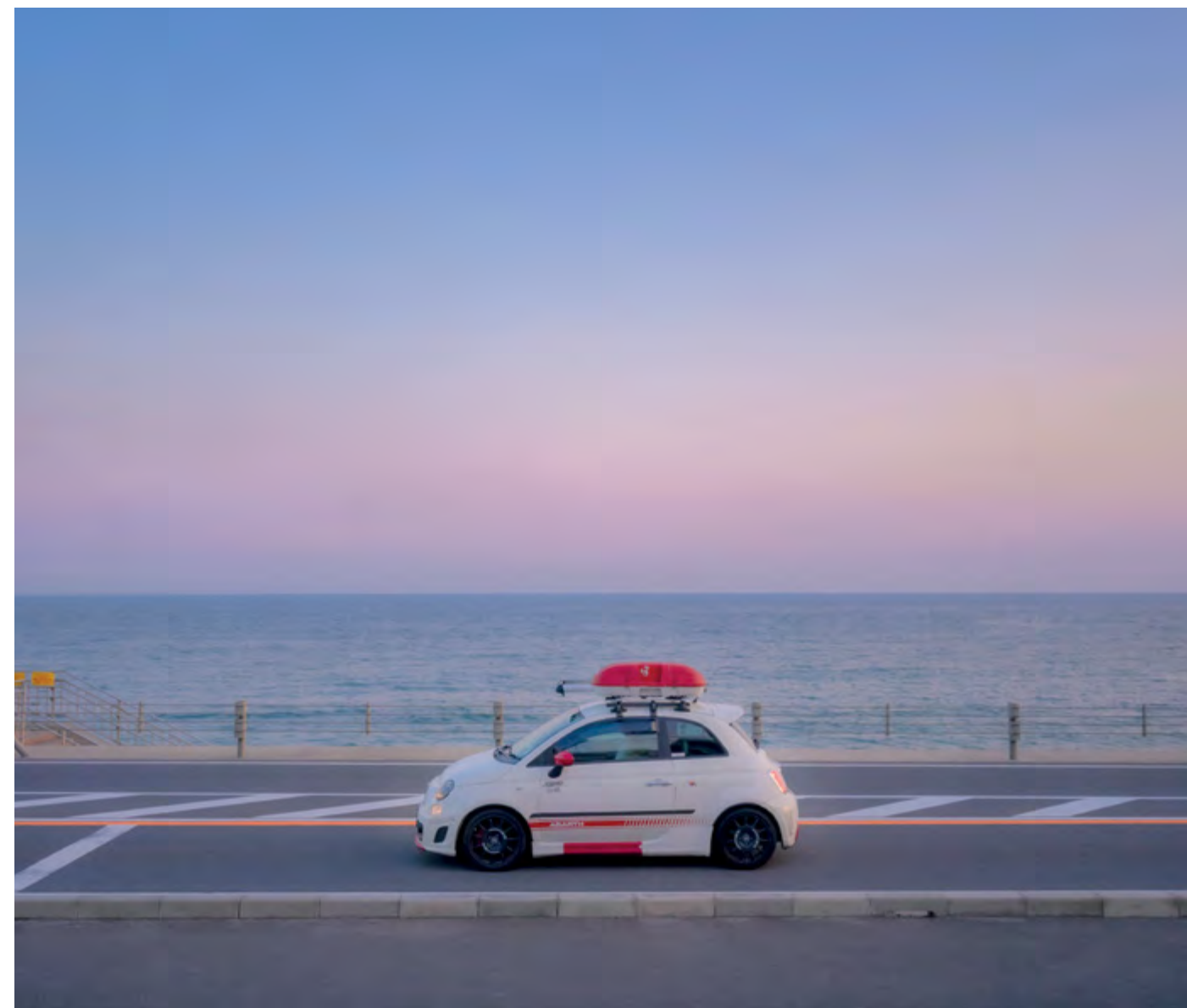
The lightweight full frame standard zoom lens with incredible image quality, clarity and bokeh.

"The NIKKOR Z 24-50mm f/4-6.3 is a compact standard zoom lens that captures a variety of shots, from wide angle to normal focal length. Whether I'm shooting indoors or outdoors, capturing stunning stills, or even short movies, its range allows me to tell my stories through photography. Furthermore, its compact and portable size has made it my favourite lens to bring with my camera everywhere I go."

STM SIC IF M/A ED AS E

Lens construction: 11 elements in 10 groups
Minimum focus distance: 0.35m/1.15 ft
Maximum reproduction ratio: 0.17x
Filter-attachment size: 52 mm
Accessories: Hood HB-98 (optional) /
Case CL-C4 (optional)

THE TRUE LIGHT WEIGHT CHAMPION



TRULY INDISPENSABLE

SIMON COETZER

"I like capturing the transient moments on the streets that are often referred to as 'city life'. People are always in a rush to get from one point to another or are too busy looking at their phones, to know what is going on in their surroundings. There is so much happening around us, and I want my photos to inspire others to see what is happening in the moment and appreciate the unique sights around us. While photography started out as a passion of mine, I am now working towards making it a profession!"

STM N ARNEO SIC IF Multi
M/A ED AS FLUORINE E FS

Lens construction: 17 elements in 15 groups
Minimum focus distance: 0.38 m/1.25 ft
Maximum reproduction ratio: 0.22x
Filter-attachment size: 82 mm
Accessories: Hood HB-87 / Case CL-C2



NIKKOR Z 24-70mm f/2.8 S

S-Line

Powerful, indispensable mid-range zoom with dazzling speed and brightness.

"The NIKKOR Z 24-70mm f/2.8 S is my workhorse lens and I love it! Its versatility allows me to achieve the most desired shots without having to constantly switch lenses while shooting, helping me capture scenes from a distance or up close and covering so much ground with the focal length and aperture. I am able to use it for various genres of photography, and the quality of photos that the lens produces is just on another level. All I have to do is ensure I always have it in my bag!"



NIKKOR Z 24-70mm f/4 S

S-Line

Unbelievably powerful photo & video lens for wide-angles, mid-range, close-ups, and everything in-between.

“The NIKKOR 24-70mm f/4 S is a versatile and dynamic lens, allowing me to capture both the intimate moments shared by people with nature, and all of its beauty. As an outdoor photographer, my lens must be as adaptive as the environment I am in — as it changes focus, light, and scale in fast fleeting moments. This NIKKOR lens supported my travels with exceptional image quality and sharpness, allowing me to take photographs of landscapes, portraits, to even wildlife in sharp-detail. All of these can be done with a twist of the newly designed function ring which allows for quick adjustment of focus, aperture or EV compensation according to the scenario, making this lens perfect for any kind of photographer.”

FOR THE TRUE POWER

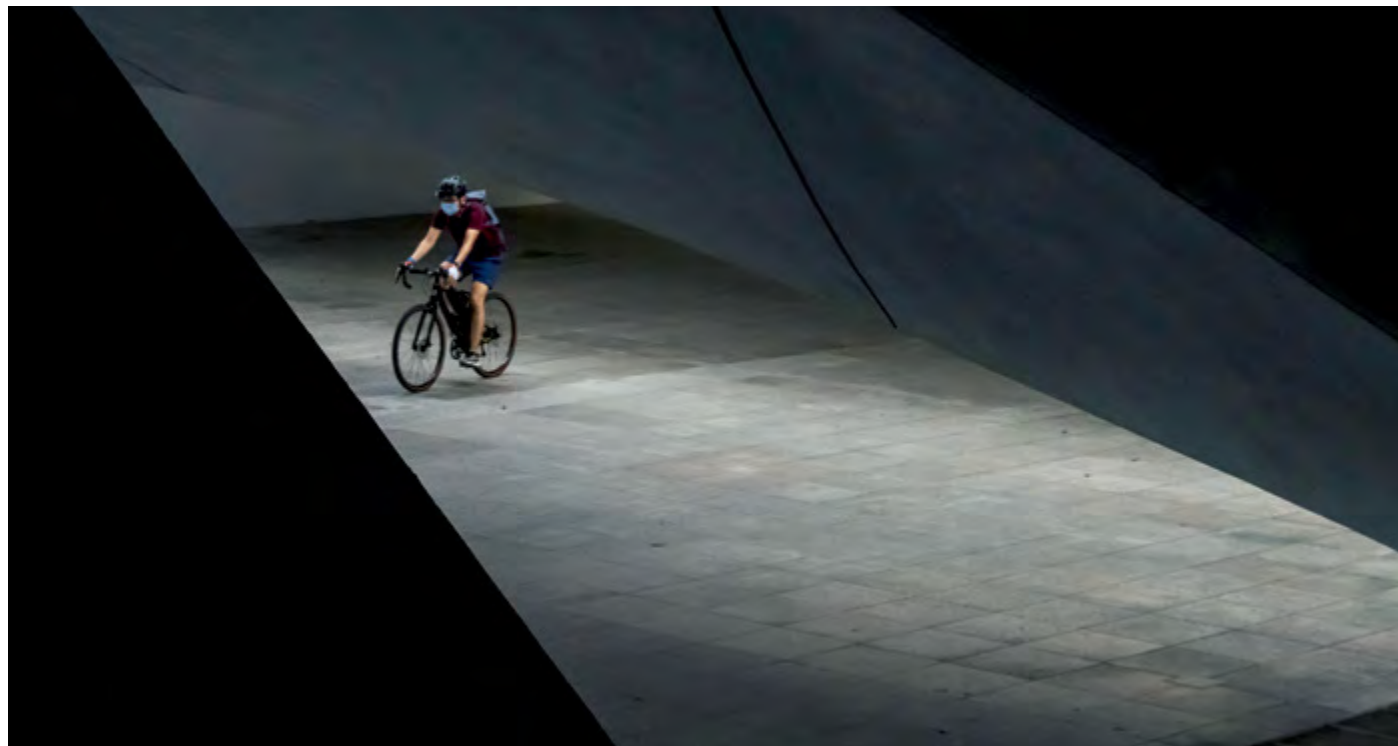
GAB MEJIA

“My passion for photography has always revolved around stories of nature, from which I find my purpose. I love how our planet’s beauty serves to inspire, and how its fragility encourages people to care. With photography, I strive to push this purpose further — through gaining a deeper appreciation and understanding of the planet and to get others to realise how much we need to conserve and protect the places we get to see now, in order to be able to dwell in its beauty for generations to come”

STM	N	SIC	IF	M/A
ASED	ED	AS	FLUORINE COAT	E

Lens construction: 14 elements in 11 groups
Minimum focus distance: 0.3 m/0.99 ft
Maximum reproduction ratio: 0.3×
Filter-attachment size: 72 mm
Accessories: Hood HB-85 / Case CL-C1

THE TRUE ALL-IN-ONE



JAVAN NG

"Photography is more than getting that amazing photo, but also about the process and planning that goes into getting the perfect shot. As a self-taught photographer growing up in Singapore, I have always appreciated its beauty — the skyline, streets, people, and stunning architecture. Along with my sense of adventure, I am always inspired to follow my passion for photography and capture the essence of the city I am in or visiting, from my creative perspective."



NIKKOR Z 24-200mm f/4-6.3 VR

Compact, versatile and a wide range of focal lengths - all in one incredible zoom lens.

"The NIKKOR Z 24-200mm f/4-6.3 VR is an extremely versatile and lightweight all-in-one zoom lens that delivers excellent image quality. With its focal length ranging from wide-angle to medium telephoto, it gives me the flexibility I need to shoot a wide variety of scenes — from city skylines to street shots and allows me to zoom in on the details — perfect for travel and city exploration."

VR	STM	ARNEO	SIC	IF	M/A
ASED	ED	AS	FLUORINE COAT	E	

Lens construction: 19 elements in 15 groups
 Minimum focus distance: 0.5 m/1.64 ft (at 24 mm)
 Maximum reproduction ratio: 0.28x
 Filter-attachment size: 67 mm
 Accessories: Hood HB-93 / Case CL-C1



THE TRUE GO-TO ZOOM

WWFOTOGRAPH

"Photography allows me to share my thoughts, perspectives, and feelings. As someone who enjoys observing surroundings, I always look for interesting subjects in my daily routine. These might be related to light and shadows, frames, guiding lines, colours, or anything that draws my attention. I focus on capturing the scene in ways that are different from what people usually perceive."



NIKKOR Z 28-75mm f/2.8

Unbelievably powerful photo & video lens for wide-angles, mid-range, close-ups, and everything in-between.

"The NIKKOR Z 28-75mm f/2.8 is a compact and versatile zoom lens with a large aperture, which provides a huge advantage when shooting interior and night photography. The lens is most suited for street photography as it lends a dynamic perspective when shooting urban settings, ranging from compact dark alleys to generous plazas. This lens features both wide angle and standard to short telephoto lens ranges; hence it is capable of handling various scenarios from day to night."

STM	SIC	IF	M/A
SUPER ED	ED	AS	E

Lens construction: 15 elements in 12 groups
Minimum focus distance: 0.19 m/0.63 ft
Maximum reproduction ratio: 0.34x
Filter-attachment size: 67 mm
Accessories: Hood HB-93A / Case CL-C2

TRULY EXQUISITE

WILL EADES

“Storms convey nature’s force and beauty, and that is why I am passionate about being able to capture their mere, fleeting moments and share the beauty and power of our natural world. Through photography, I aim to show the incredible scenes many are unable to witness firsthand, and to engage and connect with like-minded people who love and respect our amazing planet.”



NIKKOR Z 70-200mm f/2.8 VR S S-Line

Experience breathtaking image quality and exquisite low light performance, all-in-one fast telephoto zoom lens.

“A fast, reliable, and well-built lens, the NIKKOR Z 70-200mm f/2.8 VR S gets me closer to the action than it would be possible, without compromising on image quality. Achieving focus in the dark is the bane of many photographers, and none so much as storm photographers in remote or barren locations void of a light source. Under these challenging conditions, the built-in OLED display has shone a bright light and greatly increased my ability to nail my focus on distant subjects in even the darkest, wettest conditions. Shooting with this lens allows me to be in the presence of nature’s wonder and focus on shooting without worry. Not only does the lens acquire focus faster, it enables me to shoot further, and withstands the elements with its superior weather sealing capabilities, which means a longer shooting time. With this lens, it allows me to be fully present in nature’s wonder and focus on shooting without worry.”

VR	STM	N	ARNEO	SIC	IF	WRAS
M/A	FL	SR	ED	AS	FLUORINE	E

Lens construction: 21 elements in 18 groups
Minimum focus distance: 0.5 m/1.64 ft (at 70 mm)
Maximum reproduction ratio: 0.2×
Filter-attachment size: 77 mm
Accessories: Hood HB-92 / Case CL-C3

FOR THE LIGHTNING FAST

CHITTIWAT PORNPRASERT

"It has always been my ambition to become a documentary photographer, and becoming one has given me the opportunity to not only travel extensively, but more importantly, to learn more about the world we live in. I have also learned that storytelling is at the heart of documentary photography. With so many wonderful stories out there to be told, I make sure that my camera is always by my side to capture photographs that tell these stories."



NIKKOR Z 100-400mm f/4.5-5.6 VR S S-Line

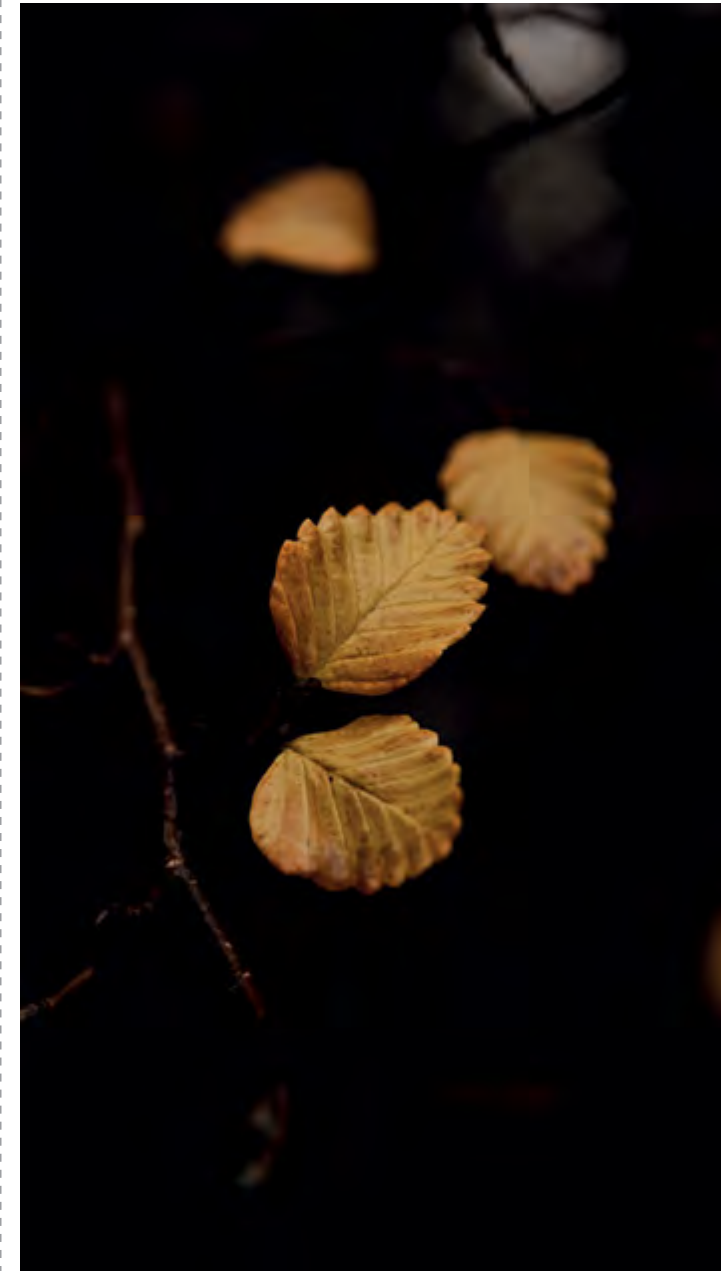
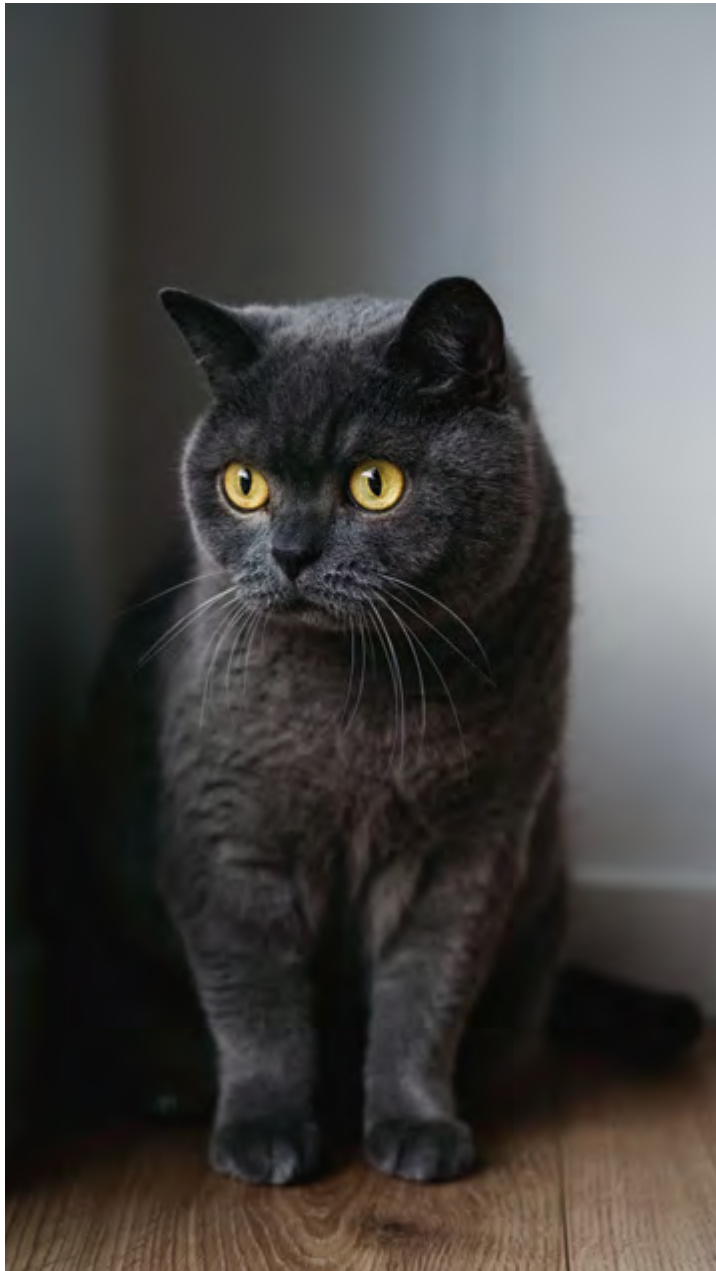
Freeze the perfect moment at any distance with the super-telephoto zoom lens with incredible operability.

"As a documentary photographer, I photograph a variety of genres, including landscape, people, nature, and wildlife. With the NIKKOR Z 100-400mm f/4.5-5.6 VR S, it eliminates the hassle of switching between different lenses, which could result in missed photo opportunities. Furthermore, having access to different lenses during my travels can be difficult so this versatile, high-quality zoom lens gives me the freedom of carrying fewer equipment which helps lighten my load. With its excellent image stabilisation and hold balance, I can precisely capture the rhythm of movement of things in sharp imagery, according to how I imagine it to be."

VR	STM	N	ARNEO	SIC	IF
FS	M/A	ED	ED	FLUORINE COAT	E

Lens construction: 25 elements in 20 groups
 Minimum focus distance: 0.75 m/2.46 ft
 Maximum reproduction ratio: 0.38×
 Filter-attachment size: 77 mm
 Accessories: Hood HB-103 / Case CL-C3

FOR THE LOVE OF MACRO



LUCY CHAMPION

"I've always been a huge nature and adventure lover — road trips, hikes, fresh air, flowers, the ocean, and pottering in the garden are some of my favourite things. I take photos of the things in life that bring me joy and hope that these images bring happiness to others who view them too. I hope that my photography inspires others to immerse themselves in nature, and appreciate landscapes and the smaller details around us."



NIKKOR Z MC 50mm f/2.8

Compact, weather-sealed lens for macro imagery and portraits that you'll love at first shot.

"Not only is the NIKKOR Z MC 50mm f/2.8 lens ideal for macro photography, it's also great for portraits! It would be handy for a wedding day shoot and excellent for capturing the finer details during wedding preparations, like jewellery, flowers, and cufflinks. This lens is also good for animals; as a cat lover, it's great for capturing crisp images of my cats and their big yellow eyes."

STM SIC M/A ED AS FLUORINE COAT E

Lens construction: 10 elements in 7 groups
Minimum focus distance: 0.16 m/0.53 ft
Maximum reproduction ratio: 1x
Filter-attachment size: 46 mm
Accessories: Hood HN-41 / Case CL-C1



NIKKOR Z MC 105mm f/2.8 VR S **S-Line**

Versatile medium-telephoto micro lens that brings you closer to your subjects with edge-to-edge sharpness.

"While the focal length of the NIKKOR Z MC 105mm f/2.8 lens is further than what I'd usually shoot with (60mm), it makes for an ideal lens for shooting a particular timepiece. I am able to place in the fill cards and modifiers close to the subject, yet stand back to avoid catching my reflection in the dial. Besides shooting watches and jewellery, the lens produces great results for portrait photography too."



TRUE CLOSENESS

LEE WAN YU

"I think of photography as a lifelong experiment that I am blessed to be able to practise every day, much like creativity and storytelling. I love shooting macro images of timepieces as it makes me feel like I am in a secret city; one that watchmakers have silently built, and it is a pleasure to be able to shine a light on the hard work that they have put into the timepieces."

VR	STM	N	ARNEO	SIC	IF
Yes	M/A	ED	AS	FLUORINE COAT	E

Lens construction: 16 elements in 11 groups
Minimum focus distance: 0.29 m/0.96 ft
Maximum reproduction ratio: 1x
Filter-attachment size: 62 mm
Accessories: Hood HB-99 / Case CL-C2

FOR THE SMALLER THAN SMALL

VR	STM	SIC	IF
M/A	ED	AS	E

Lens construction: 9 elements in 7 groups
Minimum focus distance: 0.2 m/0.66 ft (at 24 mm)
Maximum reproduction ratio: 0.2×
Filter-attachment size: 46 mm
Accessories: Hood HN-40 (optional) /
Case CL-C4 (optional)

CARMEN FOO

"I am a full-time wedding filmmaker and started taking photos of families and kids about a year ago. I was inspired by Documentary Family Photographers, a worldwide community of female photographers who celebrate real family life. My photos are all about the family and their moments because documentary family photography preserves the story of the family life at that moment: nothing is posed or directed; simply honest moments that are beautifully photographed. Personally, I prefer capturing candid moments over a formal family portrait. It is their story, and I am their biographer. I like to explore the idea of the identity by diving into my cultural roots and personal history and how that has shaped me as a person. I am drawn to the nuances of human emotions and how photographs have the power to shape narratives. I believe that all life stories deserve visual space in order to reflect the intersection of complex frames and emotions."

NIKKOR Z DX 16-50mm f/3.5-6.3 VR

DX

Compact and lightweight NIKKOR Z lens that delivers incredible images from wide to mid-telephoto for big impact.

"The NIKKOR Z DX 16-50mm f/3.5-6.3 VR lens is lightweight and fits perfectly in a small bag to bring along my travels or when meeting my friends. I like to capture street photos as the lens is light enough to bring everywhere and shoot candid moments. I love how the lens enables me to zoom from a wide-angle to close-up."





FOR THE UP CLOSE & PERSONAL



NIKKOR Z DX 18-140mm f/3.5-6.3 VR

Get closer to every scene and connect with the moment with the powerful, lightweight 7.8x high-power telephoto zoom.

"Capture more with less. With the 7.8x high-power zoom; this lens is your ideal travel buddy. Come along with the exceptional image expression is the outstanding rendering performance at all focal length within the zoom. The short minimum focal distance at 0.2m makes this one of the best versatile lens in the NIKKOR lineup."

VR	STM	SIC	IF
M/A	ED	AS	E

Lens construction: 17 elements in 13 groups
 Minimum focus distance: 0.2 m/0.66 ft
 Maximum reproduction ratio: 0.33x
 Filter-attachment size: 62 mm
 Accessories: Hood HB-101 (optional) /
 Case CL-C3 (optional)



THE TRUE HEART OF THE ACTION



NIKKOR Z DX 50-250mm f/4.5-6.3 VR DX

Freeze that frame with this powerful telephoto zoom lens. Perfect for wildlife, concerts, sports and everything else.

“The NIKKOR Z DX 50-250mm f/4.5-6.3 VR delivers on various accounts. Firstly, its compact size and lightweight make for a perfect travel partner. The lens range is very versatile, where it can be used for wide coverage, and it has a good focusing system with an anti-vibration feature. With this lens, I like to set the ISO a little higher to achieve a faster shutter speed and sharper image quality when using the telephoto range.”

VR

STM

SIC

IF

M/A

ED

E

Lens construction: 16 elements in 12 groups

Minimum focus distance: 0.5 m/1.64 ft (at 50 mm)

Maximum reproduction ratio: 0.23x

Filter-attachment size: 62 mm

Accessories: Hood HB-90A (optional) / Case CL-CI (optional)



RAPEEPORN PUTTIHARITT

“I love to take portraits of women from all walks of life and diverse backgrounds. My portraits convey their natural beauty by seamlessly blending the subject and background to tell a compelling story. While taking photos began as a hobby over 10 years ago, I’ve turned this into a professional career and became one of the top wedding photographers in northern Thailand.”



Z TELECONVERTER TC-1.4x
Z TELECONVERTER TC-2.0x

Shoot further with the teleconverter that allows you to extend your reach.

Aim farther with the Z TELECONVERTER TC-1.4x and TC-2.0x, extending the focal length by 1.4x and 2.0x respectively. With minimal equipment required, you can expand your range of telephoto shooting easily and conveniently. Superior optical and AF/VR performance is guaranteed even when attached to the main lens. Outdoor shooting is made worry-free, with superb dust and drip-resistant performance, marking this a favorite for wildlife, sports, action lovers.

AS

	TC-1.4x	TC-2.0x
Lens construction	6 elements in 4 groups	8 elements in 5 groups
Minimum focus distance	Same as that of the main lens	
Maximum reproduction ratio	1.4x that of the main lens	2.0x that of the main lens
Accessories	Case CL-C4	
Compatible lens	NIKKOR Z 400mm f/2.8 TC VR S, NIKKOR Z 400mm f/4.5 VR S, NIKKOR Z 600mm f/4 TC VR S, NIKKOR Z 800mm f/6.3 VR S, NIKKOR Z 70-200mm f/2.8 VR S, NIKKOR Z 100-400mm f/4.5-5.6 VR S	

TRUE FLEXIBILITY



MOUNT ADAPTER FTZ/FTZ II

Be free to enjoy the Z mount thanks to the compatibility and flexibility offered by Mount Adapter FTZ or FTZ II

Connecting between the F and the Z. With the Mount Adapter FTZ and FTZ II, we extend the heritage of the NIKKOR F lineup. These two mount adapters allow you to keep shooting with the NIKKOR F lenses you love and at the same time connect to the Z series world.



NIKKOR LENS GLOSSARY

© Alex Chen

All F

All-element focusing system
This is a system by which all lens elements move with focusing. The total length of the lens changes with focusing. This system helps to make the lens barrel smaller as there is no need to create space for movement inside the lens.

ARNEO

ARNEO Coat
ARNEO Coat is an anti-reflective coating system that achieves ultra-low reflectance for incident light reaching the lens surface from a vertical direction. Thanks to Nikon's original thin-layer manufacturing technology with its optimized algorithm, this system enables the capture of clear and crisp images with minimal ghost and flare effects even when a light source is located within the frame.

AS

Aspherical lens
Aspherical lens utilises non-spherical surfaces on either one or both sides of the glass in order to eliminate certain types of lens aberration. These aspherical elements are particularly useful for correcting the distortion in wide-angle lenses. Such distortions are caused by variations in the magnification of the image, depending on its distance from the optical axis. Aspherical lens elements correct these distortions by continuously changing the refractive index from the centre of the lens.

ASED

Aspherical ED glass
Using ED (Extra-low Dispersion) glass that successfully minimises colour fringing as a material, this type of lens features non-spherical surfaces on one or both sides of the glass. It provides superior rendering capability by maximising the advantages of both ED glass and an aspherical lens – effectively correcting various lens aberrations such as lateral chromatic aberration, coma flare at the periphery, as well as distortion and spherical aberration. It achieves aberration correction of ED glass and aspherical lens in one element, contributing to lens compactness.

ED

ED glass
Nikon was the world's first camera maker to develop ED (Extra-low Dispersion) glass that could minimize prism-caused colour dispersion. This low-dispersion ED glass also offers anomalous dispersion characteristics like calcium fluoride crystals, which consequently minimise the secondary spectrum. For lenses using normal optical glass, the longer the focal length, the more difficult it is to correct the chromatic aberration that causes colour fringing. Nikon's ED glass, which effectively compensates for this kind of chromatic aberration, is employed in a wide range of NIKKOR telephoto lenses for superior reproduction.

E

Lenses with an electromagnetic diaphragm mechanism
An electromagnetic diaphragm mechanism in the lens barrel provides highly accurate electronic diaphragm or aperture blade control when using auto exposure during continuous shooting.

FLUORINE COAT

Fluorine coat
Nikon's fluorine coat effectively repels dust, water droplets, grease, or dirt, ensuring easy removal even when they adhere to the lens surface. Thanks to Nikon's original technology, it delivers higher durability and is more peel-resistant. Compared to other manufacturers' coating of a similar kind, fluorine coat endures a higher frequency of lens surface wiping and provides longer-duration staying power. Its anti-reflective effect also contributes to the capture of clear images.

FL

Fluorite lens
Fluorite is a monocrystal optical material that features a high transmission rate within both the infrared and ultraviolet zones. With its superb anomalous dispersion properties, fluorite intensely blocks the secondary spectrum in order to effectively correct chromatic aberration within the visible light spectrum – something that is more difficult to achieve at longer focal lengths. It is also significantly lighter than optical glass, giving you a more effective lens with less weight.

IF

Internal Focusing
Imagine being able to focus a lens without it changing in size. Nikon's IF technology enables just that. All internal optical movement is limited to the interior of the non-extending lens barrel. This allows for a more compact, lightweight construction as well as a closer focusing distance. In addition, a smaller and lighter focusing lens group is employed to ensure faster focusing. The IF system is featured in most NIKKOR telephoto and selected NIKKOR zoom lenses.

M

Meso Amorphous Coat
Meso Amorphous Coat suppresses ghost and flare caused by incident light from any direction, including those entering the lens diagonally and vertically, to the utmost limit, demonstrating the highest anti-reflection performance in NIKKOR history. With this coating system, amorphous particles are interconnected and overlapped randomly to create a large number of air gaps termed mesopores. The many gaps within the coating form an ultra-fine mesoporous structure, attaining an outstandingly low refractive index. Additionally, a higher-precision base coat is employed to further enhance the anti-reflection effect.

M/A

M/A (manual-priority auto) mode
Simply by rotating a focus ring, M/A mode allows you to switch from autofocus to manual with virtually no time lag. This makes it possible to seamlessly switch to fine manual focusing while looking through the viewfinder.

Multi-FS

Multi-focusing system
Via a combination of multiple AF drive units providing driving power at high speed and with high accuracy, the position of the focus groups is precisely controlled, resulting in extremely accurate and high-speed AF control. Also, by effectively reducing aberrations, superb imaging performance is delivered across the entire shooting range including close distances.

N

Nano Crystal Coat
Originating from Nikon's work in semiconductor manufacturing technology, NIKKOR's Nano Crystal Coat is an antireflective coating that employs an extra-low refractive index coating featuring ultra-fine, nano-sized* crystal particles. These crystallised particles eliminate reflections inside the lens throughout the spectrum of visible light waves (380 to 780 nm) in ways that far exceed the limits of conventional antireflection coating systems. Nano Crystal Coat not only solves ghost effects caused by red light, which was incredibly difficult for previous systems. It also effectively reduces ghost and flare effects caused by light entering the lens diagonally. The result: clearer images.
*One nanometre equals one millionth of a millimetre.

PF

Phase Fresnel lens
The PF (Phase Fresnel) lens, developed by Nikon, effectively compensates chromatic aberration utilizing the photo diffraction phenomenon*. It provides superior chromatic aberration compensation performance when combined with a normal glass lens. Compared to many general camera lenses that employ an optical system using the photorefractive phenomenon, a remarkably compact and lightweight body can be attained with a smaller number of lens elements.
*Diffraction phenomenon: Light has characteristics as a waveform. When a waveform faces an obstacle, it attempts to go around and behind it, and this characteristic is referred to as diffraction. Diffraction causes chromatic dispersion in the reverse order of refraction.

SIC

Nikon Super Integrated Coating
Nikon's exclusive multilayer lens coating achieves high transmittance in a wider wavelength range. Even for zoom lenses with a large number of glass elements, this coating system effectively reduces the ghost and flare effects that are likely to occur in backlit situations, helping you achieve high-contrast images with rich gradation. With outstanding colour balance and reproduction capability, superb optical performance can be achieved. Ghost and flare effects caused by internal reflections particular to digital cameras are also effectively minimised. This coating system is applied to all current lenses in the NIKKOR lineup.

SR

SR lens
Nikon's original SR (Short-wavelength Refractive) lens is a high- and specialised-dispersion glass lens featuring characteristics to greatly refract light with wavelengths shorter than that of blue. By controlling short-wavelength light that is difficult to compensate, light of various specific wavelengths can be more effectively collected achieving highly precise chromatic aberration compensation. Because this lens can be used in the same way as normal glass lenses, more flexible optical design is attained without limitations in lens layout. While realising high optical performance, a compact and light lens can be designed.

SSVCM

Silky Swift VCM
Silky Swift Voice Coil Motor (SSVCM) is a new AF drive actuator that combines a voice coil motor (VCM) and a new guide mechanism developed by Nikon. The advanced guide mechanism incorporates guide parts between the lens chamber and where the guide bar touches to minimise gaps to the limit, effectively eliminating vibration within the AF drive. Utilising advantageous features such as this, the superb AF drive system simultaneously delivers higher-speed, higher-accuracy, and quieter AF operation, realising unprecedented AF performance. Even heavy lenses can be controlled precisely at high speed and with minimum noise or vibration. This enables users to reliably capture sharply focused images of decisive moments while also contributing to extremely quiet shooting in both stills and video.

STM

Stepping Motor
Motor operation is synchronised with pulse electric power, rotating one step per electric pulse. It offers high response and controllability for starting and stopping, and its simple mechanical structure allows for extremely quiet operation. Useful for video shooting and other times when operational noise from the lens is a concern.

SUPER ED

Super ED glass
Nikon has also developed Super ED glass featuring even lower dispersion properties and extremely high performance in reducing the secondary spectrum, to minimise chromatic aberration even further, as well as other lens aberrations.

RF

Rear Focusing
With Nikon's Rear Focusing (RF) system, all the lens elements are divided into specific lens groups, with only the rear lens group moving for focusing. This makes autofocus operation smoother and faster.

VR

(VR) Vibration Reduction
With NIKKOR's Vibration Reduction system, camera shake information is detected by the VR sensor of the VR lens unit, which is continually in motion inside the lens, aligning the optical axis with your camera's imaging sensor, thereby reducing image blur. By providing the equivalent of shooting at shutter speeds up to 5.5 stops* faster, the system allows you to reliably focus on shutter opportunities even for telephoto shooting, night landscapes and low-light indoor shots. Some VR lenses adopt "SPORT" mode as a VR mode option that is particularly effective when tracking subjects moving radically or erratically throughout the frame.
*Based on CIPA Standard. The value is achieved when: DX-format lenses are attached to a DX-format digital SLR camera, FX-format compatible lenses are attached to an FX-format digital SLR camera, and zoom lenses are set at the maximum telephoto position.

SPECIFICATIONS

Lens name	Lens construction [groups/ elements]	Angle of view with FX-format cameras	Angle of view with DX-format cameras	Focusing system ^{*1}	Vibration Reduction (VR)		Number of diaphragm blades	Minimum f-stop	Minimum focus distance ^{*3} [m/ft]	Maximum reproduction ratio[×]	Weight [g]	Diameter × length ^{*4} [mm]	Filter-attachment size [mm]	Teleconverter compatibility ^{*6}
					Effect in stops ^{*2}	VR mode								
NIKKOR Z 20mm f/1.8 S	11/14	94°	70°	Multi-focusing system, IF	—	—	9	16	0.2/0.66	0.19	505	84.5 x 108.5	77	—
NIKKOR Z 24mm f/1.8 S	10/12	84°	61°	Multi-focusing system, RF	—	—	9	16	0.25/0.82	0.15	450	78 x 96.5	72	—
NIKKOR Z 26mm f/2.8	6/8	79°	57°	All-element focusing system	—	—	7	16	0.2/0.66	0.19	125	70 x 23.5	52	—
NIKKOR Z 28mm f/2.8	8/9	75°	53°	Multi-focusing system, IF	—	—	7	16	0.19/0.63	0.2	155	70 x 43	52	—
NIKKOR Z 28mm f/2.8 (SE)	8/9	75°	53°	Multi-focusing system, IF	—	—	7	16	0.19/0.63	0.2	160	71.5 x 43	52	—
NIKKOR Z 35mm f/1.8 S	9/11	63°	44°	Multi-focusing system, RF	—	—	9	16	0.25/0.82	0.19	370	73 x 86	62	—
NIKKOR Z 40mm f/2	4/6	57°	38°50'	IF	—	—	9	16	0.29/0.96	0.17	170	70 x 45.5	52	—
NIKKOR Z 40mm f/2 (SE)	4/6	57°	38°50'	IF	—	—	9	16	0.29/0.96	0.17	170	71.5 x 45.5	52	—
NIKKOR Z 50mm f/1.2 S	15/17	47°	31°30'	Multi-focusing system, IF	—	—	9	16	0.45/1.48	0.15	1090	89.5 x 150	82	—
NIKKOR Z 50mm f/1.8 S	9/12	47°	31°30'	IF	—	—	9	16	0.4/1.32	0.15	415	76 x 86.5	62	—
NIKKOR Z 58mm f/0.95 S Noct	10/17	40°50'	27°20'	Front focusing	—	—	11	16	0.5/1.64	0.19	2000	102 x 153	82	—
NIKKOR Z 85mm f/1.2 S	10/15	28°30'	18°50'	Multi-focusing system, IF	—	—	11	16	0.85/2.79	0.11	1160	102.5 x 141.5	82	—
NIKKOR Z 85mm f/1.8 S	8/12	28°30'	18°50'	Multi-focusing system, IF	—	—	9	16	0.8/2.62	0.12	470	75 x 99	67	—
NIKKOR Z 400mm f/2.8 TC VR S	19/25	6°10' (4°30') ^{*5}	4° (2°50') ^{*5}	IF	5.5	Normal/Sport	9	22 (32) ^{*5}	2.5/8.21	0.17	2950	156 x 380	46	●
NIKKOR Z 400mm f/4.5 VR S	13/19	6°10'	4°	IF	5.5	Normal/Sport	9	32	2.5/8.21	0.16	1245	104 x 234.5	95	●
NIKKOR Z 600mm f/4 TC VR S	20/26	4°10' (3°) ^{*5}	2°40' (2°) ^{*5}	IF	5.0	Normal/Sport	9	32 (45) ^{*5}	4.3/14.11	0.14	3260	165 x 437	46	●
NIKKOR Z 800mm f/6.3 VR S	14/22	3°10'	2°	IF	5.0	Normal/Sport	9	32	5/16.41	0.16	2385	140 x 385	46	●
NIKKOR Z 14-24mm f/2.8 S	11/16	114°-84°	90°-61°	IF	—	—	9	22	0.28/0.92	0.13	650	88.5 x 124.5	112	—
NIKKOR Z 14-30mm f/4 S	12/14	114°-72°	90°-50°	IF	—	—	7	22	0.28/0.92	0.16	485	89 x 85	82	—
NIKKOR Z 17-28mm f/2.8	11/13	104°-75°	79°-53°	IF	—	—	9	22	0.19/0.63	0.19	450	75 x 101	67	—
NIKKOR Z 24-50mm f/4-6.3	10/11	84°-47°	61°-31°30'	IF	—	—	7	22-36	0.35/1.15	0.17	195	73.5 x 51	52	—
NIKKOR Z 24-70mm f/2.8 S	15/17	84°-34°20'	61°-22°50'	Multi-focusing system, IF	—	—	9	22	0.38/1.25	0.22	805	89 x 126	82	—
NIKKOR Z 24-70mm f/4 S	11/14	84°-34°20'	61°-22°50'	IF	—	—	7	22	0.3/0.99	0.3	500	77.5 x 88.5	72	—
NIKKOR Z 24-120mm f/4 S	13/16	84°-20°20'	61°-13°20'	Multi-focusing system, IF	—	—	9	22	0.35/1.15	0.39	630	84 x 118	77	—
NIKKOR Z 24-200mm f/4-6.3 VR	15/19	84°-12°20'	61°-8°	IF	5.0	Normal/Sport	7	22-36	0.5/1.64	0.28	570	76.5 x 114	67	—
NIKKOR Z 28-75mm f/2.8	12/15	75°-32°10'	53°-21°20'	IF	—	—	9	22	0.19/0.63	0.34	565	75 x 120.5	67	—
NIKKOR Z 70-200mm f/2.8 VR S	18/21	34°20'-12°20'	22°50'-8°	Multi-focusing system, IF	5.5	Normal/Sport	9	22	0.5/1.64	0.2	1360	89 x 220	77	●
NIKKOR Z 100-400mm f/4.5-5.6 VR S	20/25	24°20'-6°10'	16°-4°	Multi-focusing system, IF	5.5	Normal/Sport	9	32-40	0.75/2.46	0.38	1435	98 x 222	77	●
NIKKOR Z MC 50mm f/2.8	7/10	47°	31°30'	Front focusing	—	—	9	22-32	0.16/0.53	1	260	74.5 x 66	46	—
NIKKOR Z MC 105mm f/2.8 VR S	11/16	23°10'	15°20'	Multi-focusing system, IF	4.5	Normal/Sport	9	32	0.29/0.96	1	630	85 x 140	62	—
NIKKOR Z DX 16-50mm f/3.5-6.3 VR	7/9	—	83°-31°30'	IF	4.5	Normal/Sport	7	22-40	0.2/0.66	0.2	135	70 x 32	46	—
NIKKOR Z DX 18-140mm f/3.5-6.3 VR	13/17	—	76°-11°30'	IF	5.0	Normal/Sport	7	22-40	0.2/0.66	0.33	315	73 x 90	62	—
NIKKOR Z DX 50-250mm f/4.5-6.3 VR	12/16	—	31°30'-6°30'	IF	5.0	Normal/Sport	7	22-32	0.5/1.64	0.23	405	74 x 110	62	—

^{*1} With the IF (Internal Focusing) system, the shorter the shooting distance, the shorter the focal length becomes because of its optical characteristics.

^{*2} Based on CIPA Standard. This value is achieved when: DX-format lenses are attached to a DX-format camera, FX-format compatible lenses are attached to an FX-format camera, and zoom lenses are set at the maximum telephoto position.

^{*3} Minimum focus distance is the distance from a camera's focal plane mark to the subject.

^{*4} Distance from camera lens mount flange.

^{*5} With built-in teleconverter.

^{*6} Z TELECONVERTER TC-1.4x, Z TELECONVERTER TC-2.0x



Specifications and equipment are subject to change without any notice or obligation on the part of the manufacturer. April 2023 © 2023 Nikon Corporation





WARNING

TO ENSURE CORRECT USAGE, READ MANUALS CAREFULLY BEFORE USING YOUR EQUIPMENT.
SOME DOCUMENTS CAN BE DOWNLOADED FROM downloadcenter.nikonimglib.com.



Nikon Singapore Pte. Ltd. 18 Tai Seng Street, #04-08, 18 Tai Seng, Singapore 539775 www.nikon.com.sg
Nikon Hong Kong Ltd. Unit 2001, Level 20, Tower II, Grand Century Place, 193 Prince Edward Road West, Mongkok, Kowloon, Hong Kong www.nikon.com.hk
Nikon Australia Pty Ltd. Suite 501, Level 5, 5 Rider Boulevard, Rhodes, NSW 2138, Australia www.nikon.com.au
Nikon India Private Limited Plot No. 71, Sector 32, Institutional Area, Gurgaon 122001, Haryana, India (CIN-U74999HR2007FTC036820) www.nikon.co.in
Nikon Sales (Thailand) Co., Ltd. 1 Empire Tower, 45th Floor, River Wing East, South Sathorn Rd, Yannawa, Sathorn, Bangkok 10120, Thailand www.nikon.co.th
Nikon Middle East FZE Level 14, Jafza Views 19, P.O. Box 261908, Dubai, UAE www.nikon-me.com
NIKON CORPORATION Shinagawa Intercity Tower C, 2-15-3, Konan, Minato-ku, Tokyo 108-6290, Japan www.nikon.com

 @nikonasia

 @nikonasia



© Gab Mejia